

Nishishiba

Marine & Offshore Equipment

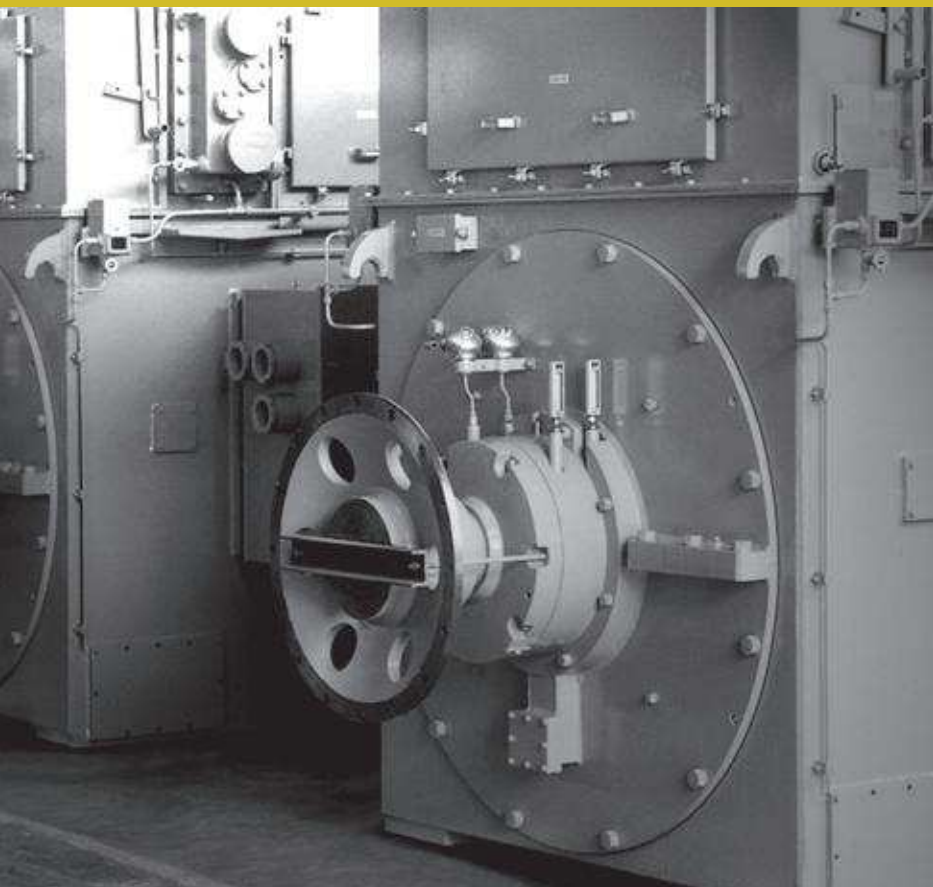


INDUCTION MOTOR

誘導電動機

High Voltage Induction Motor

高圧誘導電動機



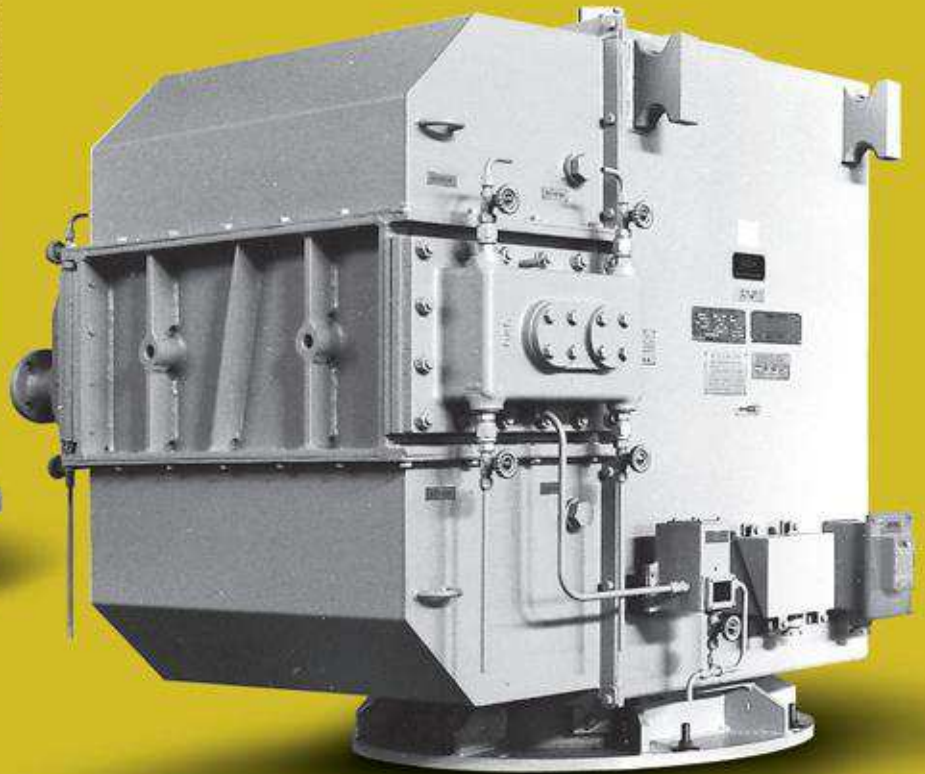
Voltage..... 3300V/6600V

CONTENTS

| | |
|-----------------------|---|
| SUMMARY | 1 |
| STANDARD | 2 |
| DATA | 3 |



BOW THRUSTER
1150kW -6P -3310V -60Hz -30min
NTKEC-VCT5



PROPULSION MOTOR
3000PS -6P -4160V -60Hz -CONT
NTIKK-RCT5

GENERAL

Nishishiba

Marine Three-phase Induction Motor, IEC Series Based Upon Advanced Design and Extensive Manufacturing Experience.

西芝の船用三相誘導電動機は“船用電気機器のトップメーカー”として豊富な経験と実績をもとに、船用専門の工場で、一般補機用、甲板機用、軸流内装形送風機用などあらゆる用途のものを設計、製作しております。

FEATURE

特長

●Works certified by major classification

J G: Japanese Government
N K: Nippon Kaiji Kyokai
ABS: American Bureau of Shipping
LRs: Lloyd's Register of Shipping
CCS: China Classification Society

●IEC based design

Application of New JIS C4210 and JEM 1410 standardized in accordance with IEC interchangeability dimensions and characteristics.

●Total quality control "ISO9001"

Total quality control system of our works guarantees highest quality, reliability and performance.

●主要船級認定工場

JG、NK、ABS、LRs、CCSの認定工場に指定されております。

●IEC規格に整合

IEC規格 (IEC Pub-34及び72)に整合性を持たせて制定されたJIS-C4210及びJEM1410規格と完全に整合し、国際的互換性を有しています。

●厳密な品質管理

ISO9001システムの導入により、高品質、高信頼性及び高性能を実現しています。

STANDARD SPECIFICATION AND OPTION

Following table shows the typical specification, other specification is also available.

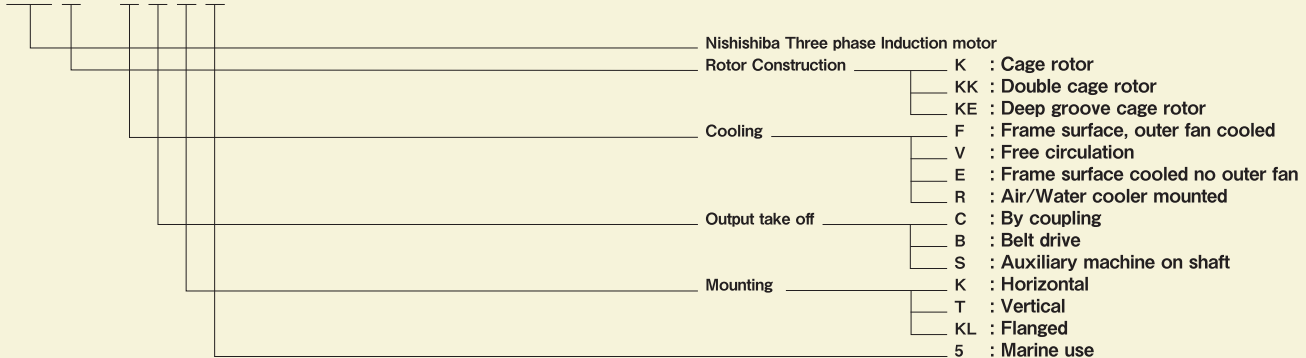
下記の表は標準的な仕様を示しております。下記以外の仕様についても対応可能です。

| ITEM | STANDARD SPECIFICATION | OPTION |
|----------------------|--|--|
| 1.Rule | ABS,BV,CCS,CR,DNV,GL,JG,KR,LRs,NK | |
| 2.Ambient conditions | Temp. 45°C or 50°C Relative humidity 95% | |
| 3.Voltage,Frequency | AC 3300V/6600V 3phase 60Hz | AC 4160V,50Hz |
| 4.Output,Revolution | Refer to Data table | Pole change |
| 5.Insulation class | class F | |
| 6.Duty | Continuous | Short time rating |
| 7.Enclosure | Protected Drip-proof Type Protection : IP22 Cooling : IC01 Totally Enclosed Fan Cooled,Splash Proof Type with Air/Water cooler Protection : IP44 Cooling : IC81W | |
| 8.Starting | Direct-On-Line | Star-Delta |
| 9.Accessory | Cable gland on terminal box and solderless terminal Shaft end Key | Space heater,High temp.sensor for stator winding |

| 項目 | 標準仕様 | オプション |
|-----------------|--|---------------------|
| 1.適用規格 | ABS,BV,CCS,CR,DNV,GL,JG,KR,LRs,NK | |
| 2.周囲条件 | 温度 45°C又は50°C 相対湿度 95% | |
| 3.定格電圧 定格周波数 | AC 3相 3300V/6600V 60Hz | AC 4160V 50Hz |
| 4.出力,回転数 | 別紙による。 | 極数変換形 |
| 5.絶縁種別 | F種 | |
| 6.時間定格 | 連続 | 短時間定格 |
| 7.外被構造 | 保護防滴形 : 保護方式 IP22 冷却方式 IC01 全閉防まつ形 : 保護方式 IP44 冷却方式 IC81W | |
| 8.始動方式 | 直入れ | スター・デルタ |
| 9.付属品 | 端子箱に防水形ケーブルグランド及び圧着端子,軸端キー | スペースヒータ,コイル高温警報用センサ |

TYPE-FORM

NTI □ - □ □ □ 5



TYPE
Drip proof horizontal type, Two endshield, ball bearing

| POLE | POWER (kW) | TYPE | FORM | MASS (kg) | FRAME No. | DIMENSION (mm) | | | | | | | DWG | | | | |
|------|------------|-------|-------|-----------|-----------|----------------|------|-------|-----|------|------|-----|-------|-----|-----|-----|-------|
| | | | | | | C | H | L | M | P | Q | KL | | | | | |
| 4 | 250 | NTIKE | VCK5 | 1300 | 12S-D | 315 | 670 | 1600 | 618 | 800 | 170 | 650 | Fig.1 | | | | |
| | 315 | | | 1450 | 12L-C | 400 | 770 | 1585 | 760 | 900 | 170 | 650 | | | | | |
| | 400 | | | 1600 | 12L-D | 400 | 770 | 1695 | 760 | 990 | 210 | 650 | | | | | |
| | 500 | | | 2050 | 13L-C | 450 | 865 | 1665 | 850 | 990 | 210 | 650 | | | | | |
| | 630 | | | 2250 | 13L-D | 450 | 865 | 1775 | 850 | 990 | 210 | 650 | | | | | |
| | 800 | | | 2350 | 13L-D | 450 | 865 | 1775 | 850 | 1040 | 210 | 650 | | | | | |
| | 900 | | | 2550 | 13L-E | 450 | 865 | 1885 | 850 | 1040 | 210 | 650 | | | | | |
| | 1000 | | | 2650 | 13L-E | 450 | 865 | 1885 | 850 | 1200 | 210 | 650 | | | | | |
| | 1100 | | | 3150 | 14S-E | 500 | 960 | 1950 | 950 | 1200 | 210 | 650 | | | | | |
| | 1250 | | | 3350 | 14S-F | 500 | 960 | 2060 | 950 | 1200 | 210 | 650 | | | | | |
| | 6 | | | 250 | NTIKE | VCK5 | 1500 | 12L-C | 400 | 770 | 1585 | 760 | | 900 | 170 | 650 | Fig.1 |
| | | | | 315 | | | 1600 | 12L-D | 400 | 770 | 1695 | 760 | | 900 | 170 | 650 | |
| 400 | | 2050 | 13L-C | 450 | | | 865 | 1665 | 850 | 990 | 210 | 650 | | | | | |
| 500 | | 2350 | 13L-D | 450 | | | 865 | 1775 | 850 | 990 | 210 | 650 | | | | | |
| 630 | | 2500 | 13L-D | 450 | | | 865 | 1775 | 850 | 990 | 210 | 650 | | | | | |
| 800 | | 3150 | 14S-E | 500 | | | 960 | 1950 | 950 | 1040 | 210 | 650 | | | | | |
| 900 | | 3350 | 14S-E | 500 | | | 960 | 1950 | 950 | 1040 | 210 | 650 | | | | | |
| 8 | | 630 | NTIKE | VCK5 | | | 3350 | 14S-D | 500 | 920 | 1840 | 950 | 1040 | 210 | 650 | | |

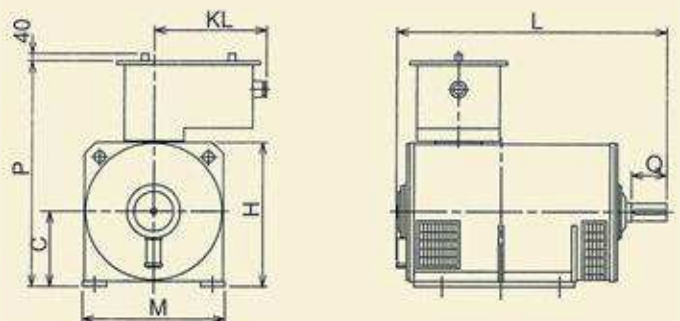


Fig. 1

■TYPE

Drip proof horizontal type, Two endshield, ball bearing

| POLE | POWER (kW) | TYPE | FORM | MASS (kg) | FRAME No. | DIMENSION (mm) | | | | | | | DWG |
|------|------------|-------|------|-----------|-----------|----------------|------|------|------|---|-----|------|-------|
| | | | | | | C | H | L | M | P | Q | KL | |
| 4 | 1600 | NTIKE | VCK5 | 3900 | 15L-F | 500 | 1700 | 2100 | 1100 | — | 250 | 1050 | Fig.2 |
| | 1000 | | | 3700 | 15L-D | 500 | 1700 | 1900 | 950 | — | 210 | 1050 | |
| 6 | 1100 | NTIKE | VCK5 | 3900 | 15L-E | 500 | 1700 | 2000 | 1100 | — | 210 | 1050 | |
| | 1250 | | | 4000 | 15L-E | 500 | 1700 | 2000 | 1100 | — | 210 | 1050 | |
| 8 | 800 | NTIKE | VCK5 | 3900 | 15L-D | 500 | 1700 | 1900 | 950 | — | 210 | 1050 | |
| | 900 | | | 4000 | 15L-D | 500 | 1700 | 1900 | 1100 | — | 210 | 1050 | |
| | 1000 | | | 4300 | 15L-E | 500 | 1700 | 2000 | 1100 | — | 210 | 1050 | |
| | 1100 | | | 5600 | 17S-D | 500 | 2000 | 2050 | 1300 | — | 250 | 1150 | |
| | 1250 | | | 5900 | 17S-D | 630 | 2000 | 2050 | 1300 | — | 250 | 1150 | |
| | 1600 | | | 6500 | 17S-E | 630 | 2000 | 2150 | 1300 | — | 250 | 1150 | |
| | 2000 | | | 7400 | 17S-F | 630 | 2000 | 2300 | 1500 | — | 250 | 1150 | |
| 10 | 630 | NTIKE | VCK5 | 3900 | 15L-D | 500 | 1700 | 1900 | 1100 | — | 210 | 1050 | |
| | 800 | | | 4300 | 15L-E | 500 | 1700 | 2000 | 1100 | — | 210 | 1050 | |
| | 900 | | | 5600 | 17S-C | 630 | 2000 | 1940 | 1300 | — | 210 | 1150 | |
| | 1000 | | | 5900 | 17S-D | 630 | 2000 | 2050 | 1300 | — | 210 | 1150 | |
| | 1100 | | | 6200 | 17S-E | 630 | 2000 | 2150 | 1300 | — | 250 | 1150 | |
| | 1250 | | | 6500 | 17S-E | 630 | 2000 | 2150 | 1300 | — | 250 | 1150 | |
| 12 | 630 | NTIKE | VCK5 | 4300 | 15L-E | 500 | 1700 | 1900 | 1100 | — | 210 | 1050 | |
| | 800 | | | 5600 | 17S-C | 630 | 2000 | 2000 | 1300 | — | 210 | 1150 | |
| | 900 | | | 6000 | 17S-D | 630 | 2000 | 1940 | 1300 | — | 210 | 1150 | |
| | 1000 | | | 6300 | 17S-E | 630 | 2000 | 2050 | 1300 | — | 210 | 1150 | |
| | 1100 | | | 6700 | 17S-E | 630 | 2000 | 2150 | 1300 | — | 250 | 1150 | |
| | 1250 | | | 7400 | 17S-F | 630 | 2000 | 2150 | 1300 | — | 250 | 1150 | |

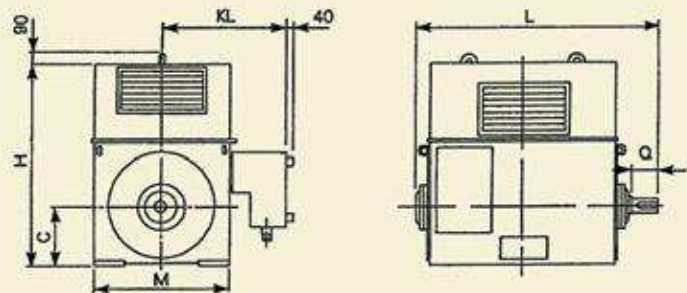


Fig. 2

TYPE
Drip proof horizontal type, Two endshield, sleeve bearing

| POLE | POWER (kW) | TYPE | FORM | MASS (kg) | FRAME No. | DIMENSION (mm) | | | | | | | DWG |
|------|------------|-------|------|-----------|-----------|----------------|------|------|------|---|-----|------|-------|
| | | | | | | C | H | L | M | P | Q | KL | |
| 4 | 2000 | NTIKE | VCC5 | 4900 | 17S-D | 630 | 2000 | 2180 | 1300 | — | 250 | 1150 | Fig.3 |
| | 2500 | | | 6200 | 17S-F | 630 | 2000 | 2400 | 1300 | — | 250 | 1150 | |
| | 3150 | | | 7000 | 17S-G | 630 | 2000 | 2550 | 1300 | — | 300 | 1150 | |
| | 4000 | | | 11200 | 18S-F | 750 | 2400 | 2530 | 1500 | — | 350 | 1250 | |
| 6 | 1600 | NTIKE | VCC5 | 5900 | 17S-E | 630 | 2000 | 2180 | 1300 | — | 250 | 1150 | |
| | 2000 | | | 6500 | 17S-F | 630 | 2000 | 2450 | 1300 | — | 250 | 1150 | |
| | 2500 | | | 7500 | 17S-H | 630 | 2000 | 2600 | 1300 | — | 250 | 1150 | |
| | 3150 | | | 10300 | 18S-F | 750 | 2400 | 2530 | 1500 | — | 350 | 1250 | |
| 8 | 4000 | NTIKE | VCC5 | 11000 | 18S-H | 750 | 2400 | 2750 | 1500 | — | 350 | 1250 | |
| | 2500 | | | 9000 | 18S-E | 750 | 2400 | 2420 | 1500 | — | 300 | 1250 | |
| | 3150 | | | 10300 | 18S-F | 750 | 2400 | 2530 | 1500 | — | 300 | 1250 | |
| | 5000 | | | 12200 | 18S-H | 750 | 2400 | 2800 | 1500 | — | 300 | 1250 | |
| 10 | 1600 | NTIKE | VCC5 | 14500 | 24L-G | 900 | 2650 | 2700 | 1800 | — | 350 | 1400 | |
| | 2000 | | | 9800 | 18S-D | 750 | 2400 | 2300 | 1500 | — | 300 | 1250 | |
| | 2500 | | | 10500 | 18S-F | 750 | 2400 | 2530 | 1500 | — | 300 | 1250 | |
| | 3150 | | | 11200 | 18S-G | 750 | 2400 | 2650 | 1500 | — | 300 | 1250 | |
| | 4000 | | | 13000 | 24S-G | 800 | 2550 | 2700 | 1600 | — | 300 | 1300 | |
| | 5000 | | | 15100 | 24L-G | 900 | 2700 | 2700 | 1800 | — | 300 | 1400 | |
| 12 | 1600 | NTIKE | VCC5 | 18000 | 25L-G | 1000 | 2900 | 2900 | 2000 | — | 350 | 1500 | |
| | 2000 | | | 9000 | 18S-E | 750 | 2400 | 2300 | 1500 | — | 300 | 1250 | |
| | 2500 | | | 11000 | 18S-F | 750 | 2400 | 2530 | 1500 | — | 300 | 1250 | |
| | 3150 | | | 13000 | 24S-G | 800 | 2550 | 2650 | 1600 | — | 300 | 1300 | |
| | 4000 | | | 15000 | 24L-G | 900 | 2700 | 2700 | 1800 | — | 300 | 1400 | |
| | 5000 | | | 17500 | 25L-F | 1000 | 2900 | 2700 | 2000 | — | 350 | 1500 | |
| | | | | 20500 | 25L-H | 1000 | 2900 | 2800 | 2000 | — | 350 | 1500 | |

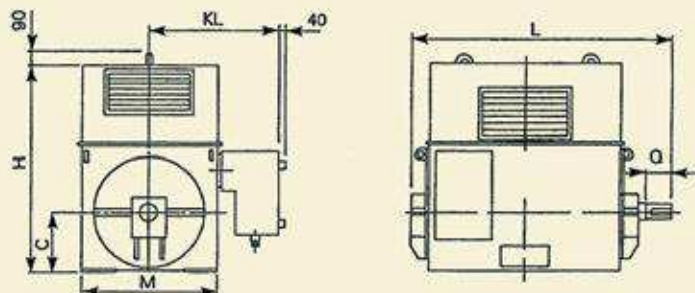


Fig. 3

■TYPE

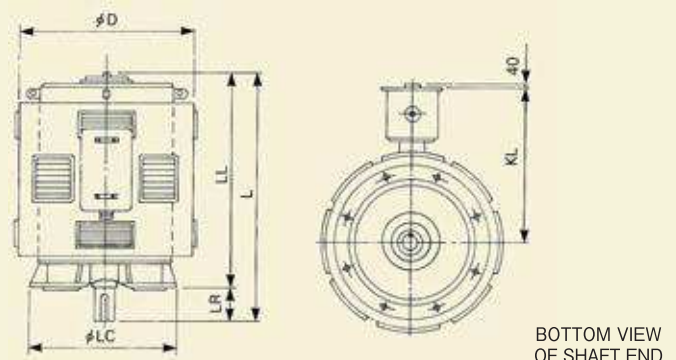
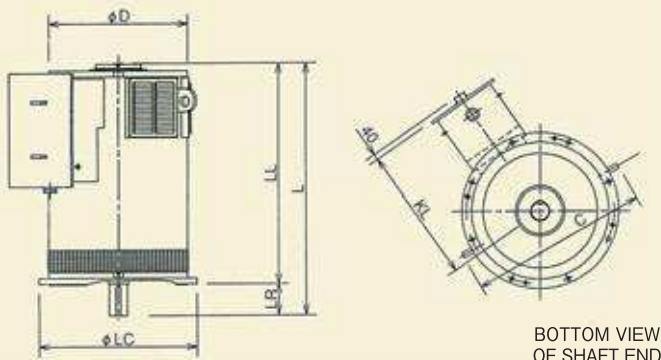
Drip proof vertical type, Two endshield, ball bearing

| POLE | POWER (kW) | TYPE | FORM | MASS (kg) | FRAME No. | DIMENSION (mm) | | | | | | | DWG |
|------|------------|-------|-------|-----------|-----------|----------------|------|-------|------|------|------|------|-------|
| | | | | | | C | D | L | LL | LC | LR | KL | |
| 4 | 250 | NTIKE | VCT5 | 1350 | 12S-D | 935 | 670 | 1700 | 1530 | 800 | 170 | 875 | Fig.4 |
| | 315 | | | 1520 | 12L-C | 1036 | 775 | 1610 | 1440 | 900 | 170 | 890 | |
| | 400 | | | 1700 | 12L-D | 1145 | 865 | 1760 | 1550 | 990 | 210 | 935 | |
| | 500 | | | 2150 | 13L-C | 1145 | 865 | 1790 | 1580 | 990 | 210 | 935 | |
| | 630 | | | 2470 | 13L-D | 1145 | 865 | 1900 | 1690 | 990 | 210 | 935 | |
| | 800 | | | 2680 | 13L-D | 1205 | 920 | 1900 | 1690 | 1040 | 210 | 960 | |
| | 900 | | | 2780 | 13L-E | 1205 | 920 | 2010 | 1800 | 1040 | 210 | 960 | |
| | 1000 | | | 3310 | 13L-E | 1284 | 1010 | 2010 | 1800 | 1200 | 210 | 1010 | |
| | 1100 | | | 3400 | 14S-E | 1284 | 1010 | 2110 | 1900 | 1200 | 210 | 1010 | |
| | 1250 | | | 3500 | 14S-F | 1284 | 1010 | 2220 | 2010 | 1200 | 210 | 1010 | |
| | 1600 | | | 4150 | 15L-F | 1580 | 1215 | 2320 | 2070 | 1400 | 250 | 1110 | |
| | 2000 | | | 5200 | 17S-D | 1580 | 1215 | 2205 | 1955 | 1400 | 250 | 1110 | |
| | 2500 | | | 6550 | 17S-F | 1580 | 1215 | 2420 | 2170 | 1400 | 250 | 1110 | |
| | 3150 | | | 7400 | 17S-G | 1580 | 1800 | 2580 | 2280 | 1460 | 300 | 1400 | |
| 6 | 250 | NTIKE | VCT5 | 1570 | 12L-C | 1036 | 775 | 1610 | 1440 | 900 | 170 | 890 | Fig.4 |
| | 315 | | | 1680 | 12L-D | 1036 | 775 | 1720 | 1550 | 900 | 170 | 890 | |
| | 400 | | | 2150 | 13L-C | 1145 | 865 | 1790 | 1580 | 990 | 210 | 935 | |
| | 500 | | | 2470 | 13L-D | 1145 | 865 | 1900 | 1690 | 990 | 210 | 935 | |
| | 630 | | | 2610 | 13L-D | 1145 | 865 | 1900 | 1690 | 990 | 210 | 935 | |
| | 800 | | | 3310 | 14S-E | 1205 | 920 | 2110 | 1900 | 1040 | 210 | 960 | |
| | 900 | | | 3500 | 14S-E | 1205 | 920 | 2110 | 1900 | 1040 | 210 | 960 | |
| | 1000 | | | 3950 | 15L-D | 1284 | 1010 | 2060 | 1850 | 1200 | 210 | 1010 | |
| | 1100 | | | 4150 | 15L-E | 1284 | 1010 | 2170 | 1960 | 1200 | 210 | 1010 | |
| | 1250 | | | 4250 | 15L-E | 1284 | 1010 | 2170 | 1960 | 1200 | 210 | 1010 | |
| | 1600 | | | 5550 | 17S-E | 1580 | 1215 | 2310 | 2060 | 1400 | 250 | 1110 | |
| | 2000 | | | 6900 | 17S-F | 1580 | 1215 | 2420 | 2170 | 1400 | 250 | 1110 | |
| | 2500 | | | 7930 | 17S-H | 1580 | 1215 | 2640 | 2390 | 1400 | 250 | 1110 | |
| | 8 | | | 630 | NTIKE | VCT5 | 3500 | 14S-D | 1205 | 920 | 2000 | 1790 | |
| 800 | | 4150 | 15L-D | 1284 | | | 1010 | 2060 | 1850 | 1200 | 210 | 1010 | |
| 900 | | 4250 | 15L-D | 1284 | | | 1010 | 2060 | 1850 | 1200 | 210 | 1010 | |
| 1000 | | 5000 | 15L-E | 1284 | | | 1010 | 2170 | 1960 | 1200 | 210 | 1010 | |
| 1100 | | 5550 | 17S-D | 1580 | | | 1215 | 2200 | 1950 | 1400 | 250 | 1110 | |
| 1250 | | 5830 | 17S-D | 1580 | | | 1215 | 2200 | 1950 | 1400 | 250 | 1110 | |
| 1600 | | 6550 | 17S-E | 1580 | | | 1215 | 2310 | 2060 | 1400 | 250 | 1110 | |
| 2000 | | 7850 | 17S-F | 1580 | | | 1215 | 2420 | 2170 | 1400 | 250 | 1110 | |
| 10 | 630 | NTIKE | VCT5 | 4150 | 15L-D | 1205 | 1010 | 2060 | 1850 | 1200 | 210 | 1010 | Fig.4 |
| | 800 | | | 4570 | 15L-E | 1205 | 1010 | 2170 | 1960 | 1200 | 210 | 1010 | |
| | 900 | | | 5550 | 17S-C | 1580 | 1215 | 2060 | 1850 | 1400 | 210 | 1110 | |
| | 1000 | | | 5830 | 17S-D | 1580 | 1215 | 2160 | 1950 | 1400 | 210 | 1110 | |
| | 1100 | | | 6550 | 17S-E | 1580 | 1215 | 2310 | 2060 | 1400 | 250 | 1110 | |
| | 1250 | | | 6900 | 17S-E | 1580 | 1215 | 2310 | 2060 | 1400 | 250 | 1110 | |
| 12 | 630 | NTIKE | VCT5 | 4550 | 15L-E | 1205 | 1010 | 2060 | 1850 | 1200 | 210 | 1010 | Fig.4 |
| | 800 | | | 5510 | 17S-C | 1205 | 1010 | 2170 | 1960 | 1200 | 210 | 1110 | |
| | 900 | | | 6350 | 17S-D | 1580 | 1215 | 2060 | 1850 | 1400 | 210 | 1110 | |
| | 1000 | | | 6670 | 17S-E | 1580 | 1215 | 2160 | 1950 | 1400 | 210 | 1110 | |
| | 1100 | | | 7100 | 17S-E | 1580 | 1215 | 2310 | 2060 | 1400 | 250 | 1110 | |
| | 1250 | | | 7830 | 17S-F | 1580 | 1215 | 2310 | 2060 | 1400 | 250 | 1110 | |

TYPE

Drip proof vertical type, Two endshield, ball bearing

| POLE | POWER (kW) | TYPE | FORM | MASS (kg) | FRAME No. | DIMENSION (mm) | | | | | | | DWG |
|------|------------|-------|------|-----------|-----------|----------------|------|------|------|------|-----|------|-------|
| | | | | | | C | D | L | LL | LC | LR | KL | |
| 4 | 4000 | NTIKE | VCT5 | 8650 | 18S-F | — | 1800 | 2750 | 2400 | 1460 | 350 | 1400 | Fig.5 |
| 6 | 3150 | NTIKE | VCT5 | 9450 | 18S-F | — | 1800 | 2650 | 2300 | 1460 | 350 | 1450 | |
| | 4000 | | | 11500 | 18S-H | — | 1800 | 2750 | 2400 | 1460 | 350 | 1450 | |
| 8 | 2500 | NTIKE | VCT5 | 9450 | 18S-E | — | 1800 | 2380 | 2080 | 1460 | 300 | 1450 | |
| | 3150 | | | 10800 | 18S-F | — | 1800 | 2490 | 2190 | 1460 | 300 | 1450 | |
| | 4000 | | | 12850 | 18S-H | — | 1800 | 2700 | 2400 | 1460 | 300 | 1450 | |
| | 5000 | | | 15250 | 24L-G | — | 2000 | 2800 | 2450 | 1660 | 350 | 1550 | |
| 10 | 1600 | NTIKE | VCT5 | 8450 | 18S-D | — | 1800 | 2270 | 1970 | 1400 | 300 | 1450 | |
| | 2000 | | | 9750 | 18S-F | — | 1800 | 2490 | 2190 | 1460 | 300 | 1450 | |
| | 2500 | | | 11700 | 18S-G | — | 1800 | 2600 | 2300 | 1460 | 300 | 1450 | |
| | 3150 | | | 13700 | 24S-G | — | 1900 | 2500 | 2200 | 1560 | 300 | 1500 | |
| | 4000 | | | 15900 | 24L-G | — | 2000 | 2750 | 2450 | 1660 | 300 | 1550 | |
| | 5000 | | | 18900 | 25L-G | — | 2200 | 2850 | 2500 | 1860 | 350 | 1650 | |
| 12 | 1600 | NTIKE | VCT5 | 9500 | 18S-E | — | 1800 | 2270 | 1970 | 1400 | 300 | 1450 | |
| | 2000 | | | 11550 | 18S-F | — | 1800 | 2490 | 2190 | 1460 | 300 | 1450 | |
| | 2500 | | | 13650 | 24S-G | — | 1800 | 2600 | 2300 | 1460 | 300 | 1500 | |
| | 3150 | | | 15750 | 24L-G | — | 1900 | 2500 | 2200 | 1560 | 300 | 1550 | |
| | 4000 | | | 18400 | 25L-F | — | 2000 | 2800 | 2450 | 1660 | 350 | 1650 | |
| | 5000 | | | 21500 | 25L-H | — | 2200 | 2850 | 2500 | 1860 | 350 | 1650 | |



■TYPE

Totally enclosed with water cooled air cooler, Two endshiled bearing

| POLE | POWER (kW) | TYPE | FORM | MASS (kg) | FRAME No. | DIMENSION (mm) | | | | | | | DWG |
|------|------------|-------|-------|-----------|-----------|----------------|------|-------|------|------|------|------|-------|
| | | | | | | C | H | L | M | Q | DB | KL | |
| 4 | 250 | NTIKE | RCK5 | 1400 | 12S-D | 315 | 980 | 1650 | 700 | 170 | 545 | 800 | Fig.6 |
| | 315 | | | 1550 | 12L-C | 355 | 1060 | 1600 | 800 | 170 | 595 | 850 | |
| | 400 | | | 1700 | 12L-D | 355 | 1100 | 1700 | 800 | 170 | 595 | 850 | |
| | 500 | | | 2200 | 13L-C | 400 | 1270 | 1650 | 900 | 170 | 635 | 900 | |
| | 630 | | | 2400 | 13L-D | 400 | 1360 | 1750 | 900 | 170 | 635 | 900 | |
| | 800 | | | 2500 | 13L-D | 400 | 1440 | 1750 | 900 | 170 | 635 | 900 | |
| | 900 | | | 2700 | 13L-E | 400 | 1440 | 1900 | 900 | 170 | 635 | 900 | |
| | 1000 | | | 2800 | 13L-E | 400 | 1520 | 1900 | 900 | 170 | 635 | 900 | |
| | 1100 | | | 3700 | 14S-E | 450 | 1700 | 1950 | 1000 | 210 | 695 | 950 | |
| | 1250 | | | 3900 | 14S-F | 450 | 1700 | 2000 | 1000 | 210 | 695 | 950 | |
| | 1600 | | | 4500 | 15L-F | 500 | 1890 | 2050 | 1100 | 210 | 745 | 1050 | |
| | 6 | | | 250 | NTIKE | RCK5 | 1600 | 12L-C | 355 | 1060 | 1600 | 800 | |
| 315 | | 1700 | 12L-D | 355 | | | 1100 | 1700 | 800 | 170 | 595 | 850 | |
| 400 | | 2200 | 13L-C | 400 | | | 1150 | 1650 | 900 | 170 | 635 | 900 | |
| 500 | | 2500 | 13L-D | 400 | | | 1270 | 1750 | 900 | 170 | 635 | 900 | |
| 630 | | 2600 | 13L-D | 400 | | | 1360 | 1750 | 900 | 170 | 635 | 900 | |
| 800 | | 3700 | 14S-E | 450 | | | 1540 | 1950 | 1000 | 210 | 695 | 950 | |
| 900 | | 3900 | 14S-E | 450 | | | 1620 | 1950 | 1000 | 210 | 695 | 950 | |
| 1000 | | 4300 | 15L-D | 500 | | | 1800 | 1850 | 1100 | 210 | 745 | 1050 | |
| 1100 | | 4550 | 15L-E | 500 | | | 1890 | 1950 | 1100 | 210 | 745 | 1050 | |
| 1250 | | 4800 | 15L-E | 500 | | | 1890 | 1950 | 1100 | 210 | 745 | 1050 | |
| 8 | 630 | NTIKE | RCK5 | 3700 | 14S-D | 450 | 1540 | 1850 | 1000 | 210 | 695 | 950 | Fig.6 |
| | 800 | | | 4500 | 15L-D | 500 | 1720 | 1850 | 1100 | 210 | 745 | 1050 | |
| | 900 | | | 4750 | 15L-D | 500 | 1800 | 1850 | 1100 | 210 | 745 | 1050 | |
| | 1000 | | | 6300 | 15L-E | 500 | 1800 | 1950 | 1100 | 210 | 745 | 1050 | |
| | 1100 | | | 6600 | 17S-D | 630 | 1900 | 2000 | 1300 | 250 | 845 | 1150 | |
| | 1250 | | | 7600 | 17S-D | 630 | 1900 | 2000 | 1300 | 250 | 845 | 1150 | |
| | 1600 | | | 8600 | 17S-E | 630 | 2200 | 2050 | 1300 | 250 | 845 | 1150 | |
| | 2000 | | | 9800 | 17S-F | 630 | 2200 | 2150 | 1300 | 250 | 845 | 1150 | |
| 10 | 630 | NTIKE | RCK5 | 4200 | 15L-D | 500 | 1640 | 1850 | 1100 | 210 | 745 | 1050 | Fig.6 |
| | 800 | | | 4700 | 15L-E | 500 | 1720 | 1950 | 1100 | 210 | 745 | 1050 | |
| | 900 | | | 6300 | 17S-C | 630 | 2060 | 2000 | 1300 | 250 | 845 | 1150 | |
| | 1000 | | | 6600 | 17S-D | 630 | 2060 | 2100 | 1300 | 250 | 845 | 1150 | |
| | 1100 | | | 7600 | 17S-E | 630 | 2200 | 2050 | 1300 | 250 | 845 | 1150 | |
| | 1250 | | | 7900 | 17S-E | 630 | 2200 | 2050 | 1300 | 250 | 845 | 1150 | |
| | 12 | | | 630 | NTIKE | RCK5 | 4700 | 15L-E | 500 | 1640 | 1950 | 1100 | |
| 800 | | 6300 | 17S-C | 630 | | | 1980 | 1850 | 1300 | 250 | 845 | 1150 | |
| 900 | | 7300 | 17S-D | 630 | | | 1980 | 1950 | 1300 | 250 | 845 | 1150 | |
| 1000 | | 7700 | 17S-E | 630 | | | 1980 | 2050 | 1300 | 250 | 845 | 1150 | |
| 1100 | | 8000 | 17S-E | 630 | | | 2060 | 2050 | 1300 | 250 | 845 | 1150 | |
| 1250 | | 8700 | 17S-F | 630 | | | 2060 | 2150 | 1300 | 250 | 845 | 1150 | |

TYPE

Totally enclosed with water cooled air cooler, Two endshield bearing

| POLE | POWER (kW) | TYPE | FORM | MASS (kg) | FRAME No. | DIMENSION (mm) | | | | | | | DWG |
|------|------------|-------|------|-----------|-----------|----------------|------|------|------|-----|-----|------|-------|
| | | | | | | C | H | L | M | Q | DB | KL | |
| 10 | 1600 | NTIKE | RCC5 | 9000 | 18S-D | 750 | 2400 | 2400 | 1500 | 300 | 945 | 1250 | Fig.7 |
| | 2000 | | | 10200 | 18S-F | 750 | 2400 | 2550 | 1500 | 300 | 945 | 1250 | |
| 12 | 1600 | NTIKE | RCC5 | 9800 | 18S-E | 750 | 2470 | 2400 | 1500 | 300 | 945 | 1250 | |
| | 2000 | | | 12000 | 18S-F | 750 | 2470 | 2500 | 1500 | 300 | 945 | 1250 | |

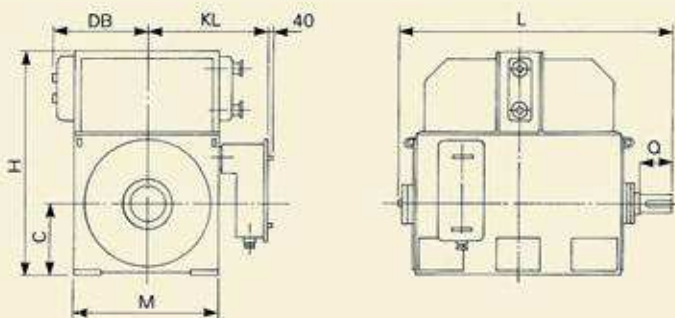


Fig. 6

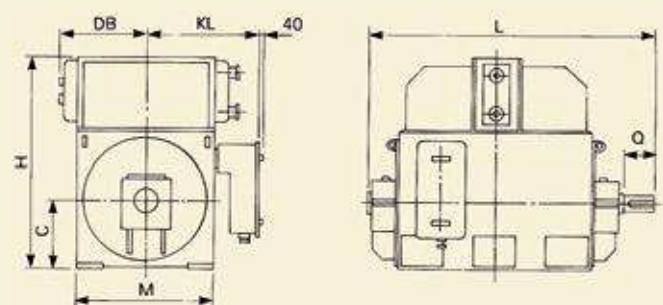


Fig. 7

■TYPE

Totally enclosed with water cooled air cooler, Two endshield bearing

| POLE | POWER (kW) | TYPE | FORM | MASS (kg) | FRAME No. | DIMENSION (mm) | | | | | | | DWG |
|------|------------|-------|------|-----------|-----------|----------------|------|------|------|-----|------|------|-------|
| | | | | | | C | H | L | M | Q | DB | KL | |
| 4 | 2000 | NTIKE | RCC5 | 5500 | 17S-D | 630 | 2200 | 2200 | 1300 | 250 | 845 | 1150 | Fig.8 |
| | 2500 | | | 6300 | 17S-F | 630 | 2200 | 2350 | 1300 | 250 | 845 | 1150 | |
| | 3150 | | | 7900 | 17S-G | 630 | 2200 | 2500 | 1300 | 250 | 845 | 1150 | |
| | 4000 | | | 10000 | 18S-F | 750 | 2450 | 2600 | 1500 | 300 | 945 | 1250 | |
| 6 | 1600 | NTIKE | RCC5 | 7900 | 17S-E | 630 | 2200 | 2200 | 1300 | 250 | 845 | 1150 | |
| | 2000 | | | 8900 | 17S-F | 630 | 2200 | 2300 | 1300 | 250 | 845 | 1150 | |
| | 2500 | | | 11000 | 17S-H | 630 | 2200 | 2500 | 1300 | 250 | 845 | 1150 | |
| | 3150 | | | 12100 | 18S-F | 750 | 2450 | 2500 | 1500 | 300 | 945 | 1250 | |
| 8 | 4000 | NTIKE | RCC5 | 13000 | 18S-H | 750 | 2450 | 2750 | 1500 | 300 | 945 | 1250 | |
| | 2500 | | | 12100 | 18S-E | 750 | 2450 | 2300 | 1500 | 300 | 945 | 1250 | |
| | 3150 | | | 13000 | 18S-F | 750 | 2450 | 2500 | 1500 | 300 | 945 | 1250 | |
| | 5000 | | | 13900 | 18S-H | 750 | 2450 | 2750 | 1500 | 300 | 945 | 1250 | |
| 10 | 2500 | NTIKE | RCC5 | 17000 | 24L-G | 900 | 2700 | 2700 | 1800 | 300 | 1095 | 1400 | |
| | 3150 | | | 13800 | 18S-G | 750 | 2400 | 2650 | 1500 | 300 | 945 | 1250 | |
| | 4000 | | | 15300 | 24S-G | 800 | 2500 | 2700 | 1600 | 300 | 995 | 1300 | |
| | 5000 | | | 17700 | 24L-G | 900 | 2700 | 2700 | 1800 | 300 | 1095 | 1400 | |
| 12 | 2500 | NTIKE | RCC5 | 20000 | 25L-G | 1000 | 2900 | 2750 | 2000 | 350 | 1195 | 1500 | |
| | 3150 | | | 15300 | 24S-G | 800 | 2500 | 2700 | 1600 | 300 | 995 | 1300 | |
| | 4000 | | | 17100 | 24L-G | 900 | 2700 | 2700 | 1800 | 300 | 1095 | 1400 | |
| | 5000 | | | 19200 | 25L-F | 1000 | 2900 | 2650 | 2000 | 350 | 1195 | 1500 | |
| | | | | 21800 | 25L-H | 1000 | 2900 | 2800 | 2000 | 350 | 1195 | 1500 | |

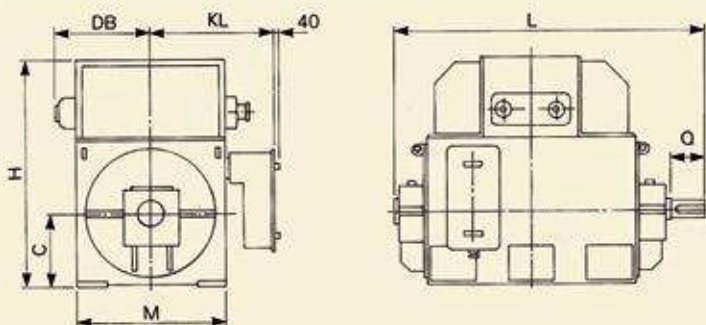


Fig. 8

TYPE

Totally enclosed with water cooled air cooler, Two endshield bearing

| POLE | POWER (kW) | TYPE | FORM | MASS (kg) | FRAME No. | DIMENSION (mm) | | | | | | | | DWG |
|------|------------|-------|------|-----------|-----------|----------------|------|------|-----|------|------|-----|------|-------|
| | | | | | | D | H | L | DB | LL | LC | LR | KL | |
| 4 | 250 | NTIKE | RCT5 | 1470 | 12S-D | 700 | 700 | 1750 | 545 | 1580 | 780 | 170 | 800 | Fig.9 |
| | 315 | | | 1630 | 12L-C | 800 | 750 | 1650 | 595 | 1480 | 800 | 170 | 850 | |
| | 400 | | | 1790 | 12L-D | 800 | 790 | 1750 | 595 | 1580 | 800 | 170 | 850 | |
| | 500 | | | 2300 | 13L-C | 900 | 920 | 1700 | 635 | 1530 | 900 | 170 | 900 | |
| | 630 | | | 2500 | 13L-D | 900 | 1010 | 1800 | 635 | 1630 | 900 | 170 | 900 | |
| | 800 | | | 2650 | 13L-D | 900 | 1090 | 1800 | 635 | 1630 | 900 | 170 | 900 | |
| | 900 | | | 2850 | 13L-E | 900 | 1090 | 1900 | 635 | 1730 | 900 | 170 | 900 | |
| | 1000 | | | 2950 | 13L-E | 900 | 1170 | 1900 | 635 | 1730 | 900 | 170 | 900 | |
| | 1100 | | | 3890 | 14S-E | 1000 | 1300 | 1950 | 695 | 1740 | 1000 | 210 | 950 | |
| | 1250 | | | 4100 | 14S-F | 1000 | 1300 | 2000 | 695 | 1790 | 1000 | 210 | 950 | |
| 6 | 250 | NTIKE | RCT5 | 1680 | 12L-C | 800 | 750 | 1650 | 595 | 1480 | 800 | 170 | 850 | Fig.9 |
| | 315 | | | 1790 | 12L-D | 800 | 790 | 1750 | 595 | 1580 | 800 | 170 | 850 | |
| | 400 | | | 2300 | 13L-C | 900 | 850 | 1700 | 635 | 1530 | 900 | 170 | 900 | |
| | 500 | | | 2630 | 13L-D | 900 | 930 | 1800 | 635 | 1630 | 900 | 170 | 900 | |
| | 630 | | | 2730 | 13L-D | 900 | 1020 | 1800 | 635 | 1630 | 900 | 170 | 900 | |
| | 800 | | | 3900 | 14S-E | 1000 | 1140 | 1950 | 695 | 1740 | 1000 | 210 | 950 | |
| | 900 | | | 4100 | 14S-E | 1000 | 1220 | 1950 | 695 | 1740 | 1000 | 210 | 950 | |
| 8 | 630 | NTIKE | RCT5 | 3890 | 14S-D | 1000 | 1140 | 1900 | 695 | 1690 | 1000 | 210 | 950 | Fig.9 |
| | 800 | | | 4730 | 15L-D | 1100 | 1270 | 1900 | 745 | 1690 | 1150 | 210 | 1050 | |
| | 900 | | | 5000 | 15L-D | 1100 | 1350 | 1900 | 745 | 1690 | 1150 | 210 | 1050 | |
| | 1000 | | | 6100 | 15L-E | 1100 | 1350 | 1950 | 745 | 1740 | 1260 | 210 | 1050 | |
| 10 | 630 | NTIKE | RCT5 | 4400 | 15L-D | 1100 | 1190 | 1900 | 745 | 1690 | 1150 | 210 | 1050 | Fig.9 |
| | 800 | | | 4950 | 15L-E | 1100 | 1270 | 2000 | 745 | 1790 | 1150 | 210 | 1050 | |
| 12 | 630 | NTIKE | RCT5 | 4940 | 15L-E | 1100 | 1190 | 2000 | 745 | 1790 | 1150 | 210 | 1050 | Fig.9 |
| | 800 | | | 6600 | 17S-C | 1300 | 1450 | 2050 | 845 | 1800 | 1360 | 250 | 1150 | |

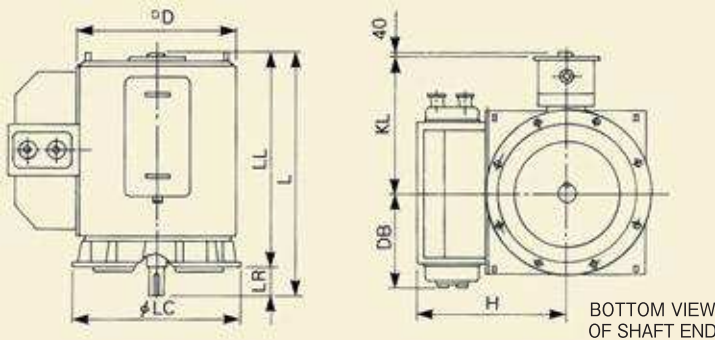
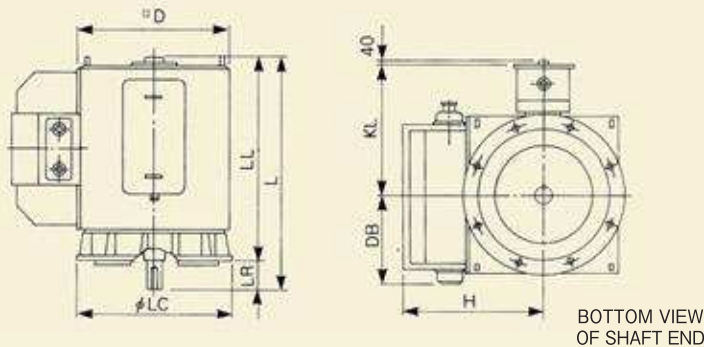


Fig. 9

■TYPE

Totally enclosed with water cooled air cooler, Two endshield bearing

| POLE | POWER (kW) | TYPE | FORM | MASS (kg) | FRAME No. | DIMENSION (mm) | | | | | | | | DWG |
|------|------------|-------|------|-----------|-----------|----------------|------|------|-----|------|------|-----|------|--------|
| | | | | | | D | H | L | DB | LL | LC | LR | KL | |
| 4 | 1600 | NTIKE | RCT5 | 4730 | 15L-F | 1100 | 1300 | 2050 | 745 | 1840 | 1150 | 210 | 1050 | Fig.10 |
| | 2000 | | | 5800 | 17S-D | 1300 | 2900 | 2200 | 845 | 1950 | 1360 | 250 | 1150 | |
| 6 | 1000 | NTIKE | RCT5 | 4520 | 15L-D | 1100 | 1300 | 1900 | 745 | 1690 | 1150 | 210 | 1050 | |
| | 1100 | | | 4800 | 15L-E | 1100 | 1300 | 2000 | 745 | 1790 | 1150 | 210 | 1050 | |
| | 1250 | | | 5050 | 15L-E | 1100 | 1300 | 2000 | 745 | 1790 | 1150 | 210 | 1050 | |
| | 1600 | | | 6300 | 17S-E | 1300 | 2900 | 2100 | 845 | 1850 | 1360 | 250 | 1150 | |
| 8 | 1000 | NTIKE | RCT5 | 6600 | 17S-D | 1300 | 1450 | 2000 | 845 | 1750 | 1360 | 250 | 1150 | |
| | 1250 | | | 7000 | 17S-D | 1300 | 1450 | 2000 | 845 | 1750 | 1360 | 250 | 1150 | |
| | 1600 | | | 8000 | 17S-E | 1300 | 1450 | 2100 | 845 | 1850 | 1360 | 250 | 1150 | |
| | 2000 | | | 9050 | 17S-F | 1300 | 1450 | 2200 | 845 | 1950 | 1360 | 250 | 1150 | |
| 10 | 900 | NTIKE | RCT5 | 6600 | 17S-C | 1300 | 1450 | 2050 | 845 | 1800 | 1360 | 250 | 1150 | |
| | 1000 | | | 6950 | 17S-D | 1300 | 1450 | 2070 | 845 | 1820 | 1360 | 250 | 1150 | |
| | 1100 | | | 7980 | 17S-E | 1300 | 1450 | 2100 | 845 | 1850 | 1360 | 250 | 1150 | |
| | 1250 | | | 8300 | 17S-E | 1300 | 1450 | 2100 | 845 | 1850 | 1360 | 250 | 1150 | |
| | 1600 | | | 9500 | 18S-D | 1500 | 3100 | 2250 | 945 | 1950 | 1560 | 300 | 1250 | |
| | 2000 | | | 10700 | 18S-F | 1500 | 3100 | 2350 | 945 | 2050 | 1560 | 300 | 1250 | |
| 12 | 900 | NTIKE | RCT5 | 7600 | 17S-D | 1300 | 1450 | 2000 | 845 | 1750 | 1360 | 250 | 1150 | |
| | 1000 | | | 8100 | 17S-E | 1300 | 1450 | 2100 | 845 | 1850 | 1360 | 250 | 1150 | |
| | 1100 | | | 8400 | 17S-E | 1300 | 1450 | 2100 | 845 | 1850 | 1360 | 250 | 1150 | |
| | 1250 | | | 9150 | 17S-F | 1300 | 1450 | 2200 | 845 | 1950 | 1360 | 250 | 1150 | |
| | 1600 | | | 10300 | 18S-E | 1500 | 1550 | 2400 | 945 | 2100 | 1560 | 300 | 1250 | |
| | 2000 | | | 12600 | 18S-F | 1500 | 1550 | 2450 | 945 | 2150 | 1560 | 300 | 1250 | |



BOTTOM VIEW OF SHAFT END

Fig. 10

TYPE

Totally enclosed with water cooled air cooler, Two endshield bearing

| POLE | POWER (kW) | TYPE | FORM | MASS (kg) | FRAME No. | DIMENSION (mm) | | | | | | | | DWG |
|------|------------|-------|------|-----------|-----------|----------------|------|------|------|------|------|-----|------|--------|
| | | | | | | D | H | L | DB | LL | LC | LR | KL | |
| 4 | 2500 | NTIKE | RCT5 | 7250 | 17S-F | 1300 | 2900 | 2400 | 845 | 2150 | 1360 | 250 | 1150 | Fig.11 |
| | 3150 | | | 8300 | 17S-G | 1300 | 2900 | 2500 | 845 | 2250 | 1360 | 250 | 1150 | |
| | 4000 | | | 10500 | 18S-F | 1500 | 3100 | 2700 | 945 | 2400 | 1560 | 300 | 1250 | |
| 6 | 2000 | NTIKE | RCT5 | 8300 | 17S-F | 1300 | 2900 | 2200 | 845 | 1950 | 1360 | 250 | 1150 | |
| | 2500 | | | 9350 | 17S-H | 1300 | 2900 | 2350 | 845 | 2100 | 1360 | 250 | 1150 | |
| | 3150 | | | 11600 | 18S-F | 1500 | 3100 | 2600 | 945 | 2300 | 1560 | 300 | 1250 | |
| 8 | 4000 | NTIKE | RCT5 | 13650 | 18S-H | 1500 | 3100 | 2800 | 945 | 2500 | 1560 | 300 | 1250 | |
| | 2500 | | | 10300 | 18S-E | 1500 | 3100 | 2400 | 945 | 2100 | 1560 | 300 | 1250 | |
| | 3150 | | | 12700 | 18S-F | 1500 | 3100 | 2500 | 945 | 2200 | 1560 | 300 | 1250 | |
| | 5000 | | | 14600 | 18S-H | 1500 | 3100 | 2700 | 945 | 2400 | 1560 | 300 | 1250 | |
| 10 | 4000 | NTIKE | RCT5 | 17850 | 24L-G | 1800 | 3400 | 2800 | 1095 | 2500 | 1860 | 300 | 1400 | |
| | 2500 | | | 14500 | 18S-G | 1500 | 3100 | 2400 | 945 | 2100 | 1560 | 300 | 1250 | |
| | 3150 | | | 16100 | 24S-G | 1600 | 3200 | 2500 | 995 | 2200 | 1660 | 300 | 1300 | |
| | 5000 | | | 18500 | 24L-G | 1800 | 3400 | 2800 | 1095 | 2500 | 1860 | 300 | 1400 | |
| 12 | 4000 | NTIKE | RCT5 | 21000 | 25L-G | 2000 | 3600 | 2900 | 1195 | 2550 | 2100 | 350 | 1500 | |
| | 2500 | | | 16000 | 24S-G | 1600 | 3200 | 2500 | 995 | 2200 | 1660 | 300 | 1300 | |
| | 3150 | | | 18000 | 24L-G | 1800 | 3400 | 2800 | 1095 | 2500 | 1860 | 300 | 1400 | |
| | 5000 | | | 20200 | 25L-F | 2000 | 3600 | 2900 | 1195 | 2550 | 2100 | 350 | 1500 | |
| | | | | 22900 | 25L-H | 2000 | 3600 | 3100 | 1195 | 2750 | 2100 | 350 | 1500 | |

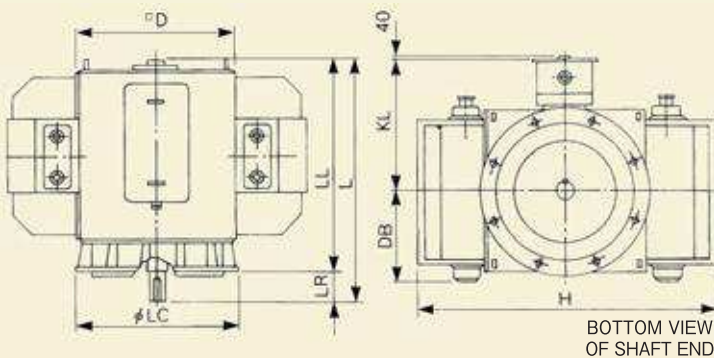


Fig. 11



NISHISHIBA ELECTRIC CO., LTD.
西芝電機株式会社

■ HEAD OFFICE, FACTORY & BRANCHES

Head Office & Factory

1000 Hamada, Aboshi-ku,
Himeji 671-1280, Japan.
Phone: Himeji +81-79-271-2448
Facsimile: +81-79-271-2305

Tokyo Branch

72-34, Horikawa-cho, Saiwai-ku,
Kawasaki 212-8585, Japan.
Phone: Kawasaki +81-44-542-2400
Facsimile: +81-44-542-2405

Osaka Branch

29th Fl., Umeda Sky Building West Tower,
1-30, Oyodonaka 1-chome, Kita-ku, Osaka 531-6129, Japan.
Phone: Osaka +81-6-4797-2448
Facsimile: +81-6-4797-2453

Hiroshima Branch

Grand Building Otemachi, 11-2, Otemachi 2-chome, Naka-ku,
Hiroshima 730-0051, Japan.
Phone: Hiroshima +81-82-244-1830
Facsimile: +81-82-247-4098

Fukuoka Branch

Toshiba Fukuoka Building, 4-1, Nagahama 2-chome, Chuo-ku,
Fukuoka 810-0072, Japan.
Phone: Fukuoka +81-92-722-2448
Facsimile: +81-92-722-2300

■ 本社、工場、支社、支店

本社・工場

〒671-1280
兵庫県姫路市網干区浜田1000番地
Tel:(079)271-2448(代)
Facsimile:(079)271-2305

東京支社

〒212-8585
神奈川県川崎市幸区堀川町72番地34(ラゾーナ川崎東芝ビル)
Tel:(044)542-2400(代)
Facsimile:(044)542-2405

関西支社

〒531-6129
大阪府大阪市北区大淀中1丁目1番30号(梅田スカイビル タワーウエスト29階)
Tel:(06)4797-2448(代)
Facsimile:(06)4797-2453

中国支店

〒730-0051
広島県広島市中区大手町2丁目11番2号(グランドビル大手町)
Tel:(082)244-1830(代)
Facsimile:(082)247-4098

九州支店

〒810-0072
福岡県福岡市中央区長浜2丁目4番1号(東芝福岡ビル)
Tel:(092)722-2448(代)
Facsimile:(092)722-2300

<http://www.nishishiba.co.jp>



安全に関するご注意
Safety Precautions

- 正しく安全にお使いいただくために、ご使用前に必ず取扱説明書をよくお読み下さい。
- Operators should read the INSTRUCTION MANUAL before starting operation on safe use of the product.

- 資料の内容は、お断りなしに変更することがありますのでご了承下さい。
- The data given in this catalogue are subject to change without notice.