

Nishishiba

Marine & Offshore Equipment

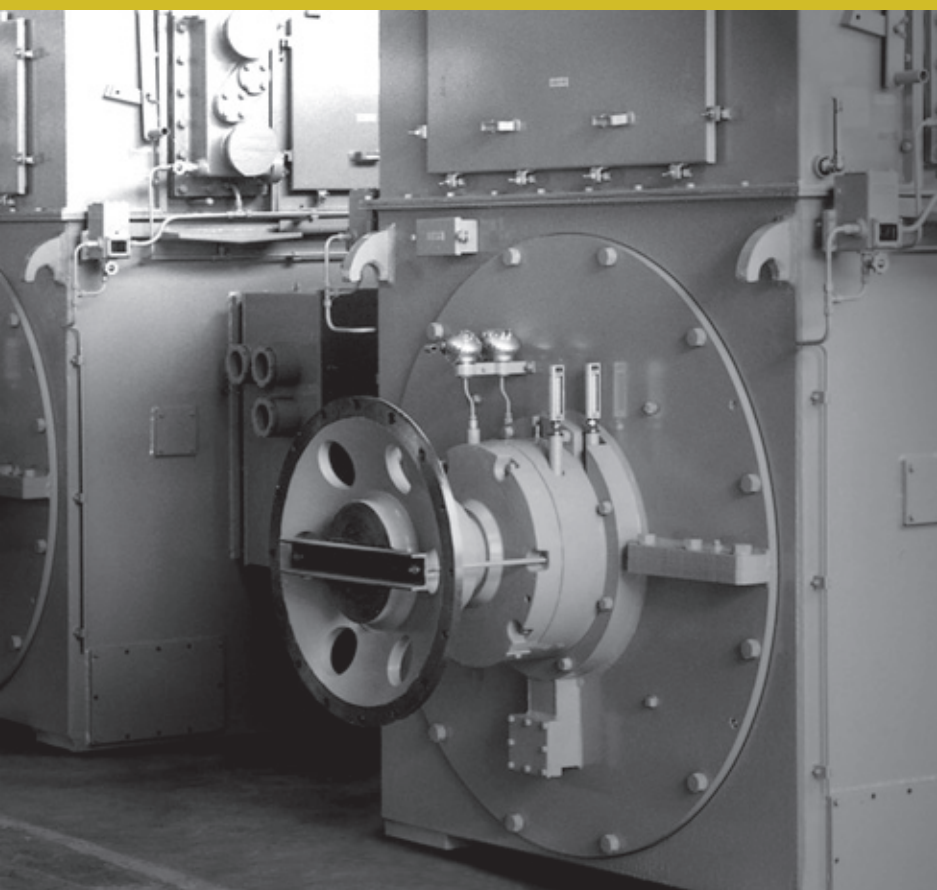


INDUCTION MOTOR

誘導電動機

High Voltage Induction Motor

高圧誘導電動機



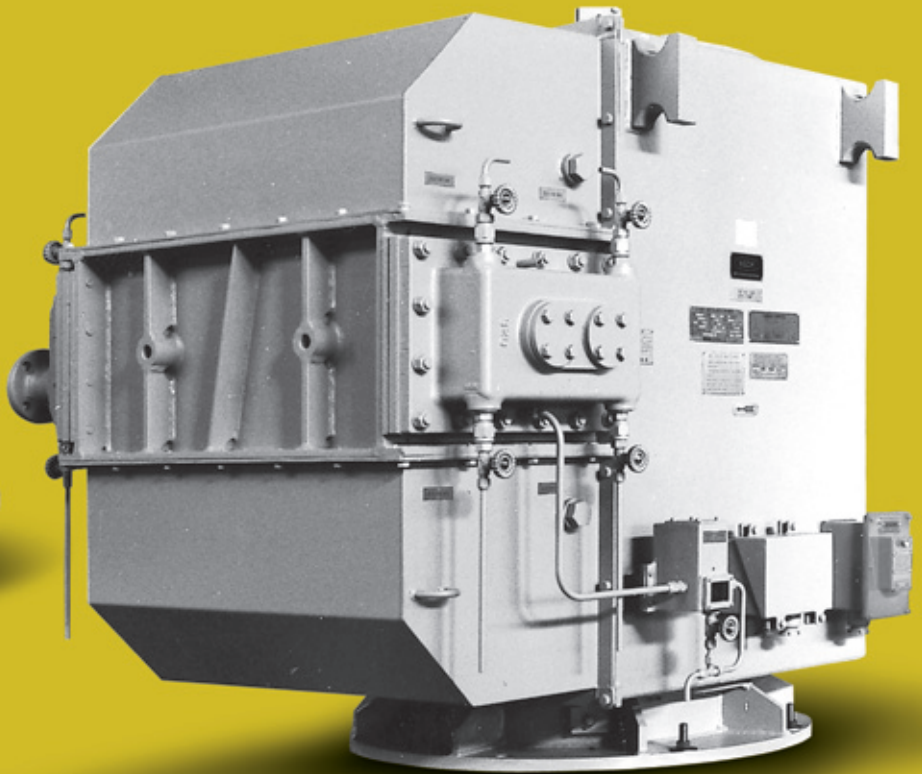
Voltage..... 3300V/6600V

CONTENTS

SUMMARY	1
STANDARD	2
DATA	3



BOW THRUSTER
1150kW -6P -3310V -60Hz -30min
NTKEC-VCT5



PROPULSION MOTOR
3000PS -6P -4160V -60Hz -CONT
NTIKK-RCT5

GENERAL

Nishishiba**Marine Three-phase Induction Motor, IEC Series Based Upon Advanced Design and Extensive Manufacturing Experience.**

西芝の船用三相誘導電動機は“船用電気機器のトップメーカー”として豊富な経験と実績をもとに、船用専門の工場で、一般補機用、甲板機用、軸流内装形送風機用などあらゆる用途のものを設計、製作しております。

FEATURE

特長

●Works certified by major classification

J G: Japanese Government
N K: Nippon Kaiji Kyokai
ABS: American Bureau of Shipping
LRs: Lloyd's Register of Shipping
CCS: China Classification Society

●IEC based design

Application of New JIS C4210 and JEM 1410 standardized in accordance with IEC interchangeability dimensions and characteristics.

●Total quality control "ISO9001"

Total quality control system of our works guarantees highest quality, reliability and performance.

●主要船級認定工場

JG、NK、ABS、LRs、CCSの認定工場に指定されております。

●IEC規格に整合

IEC規格 (IEC Pub-34及び72)に整合性を持たせて制定されたJIS-C4210及びJEM1410規格と完全に整合し、国際的互換性を有しています。

●厳密な品質管理

ISO9001システムの導入により、高品質、高信頼性及び高性能を実現しています。

STANDARD SPECIFICATION AND OPTION

Following table shows the typical specification, other specification is also available.

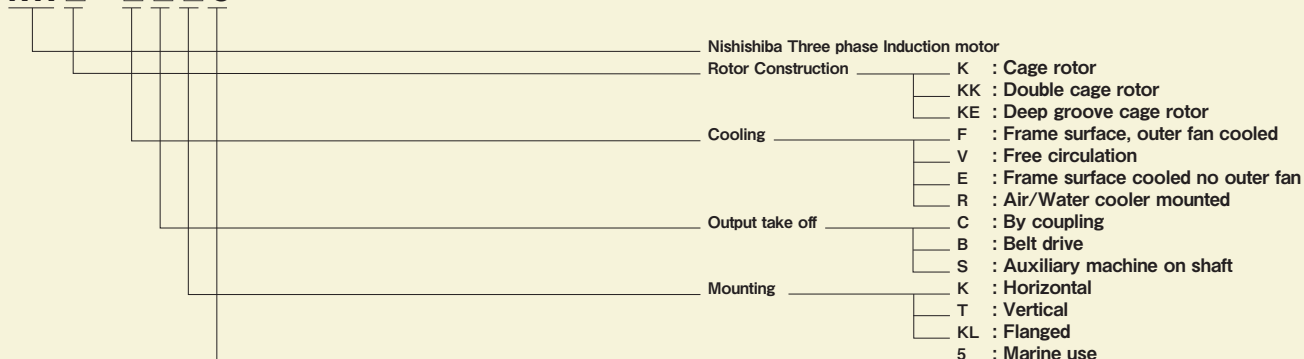
下記の表は標準的な仕様を示しております。下記以外の仕様についても対応可能です。

ITEM	STANDARD SPECIFICATION	OPTION
1.Rule	ABS,BV,CCS,CR,DNV,GL,JG,KR,LRs,NK	
2.Ambient conditions	Temp. 45°C or 50°C Relative humidity 95%	
3.Voltage,Frequency	AC 3300V/6600V 3phase 60Hz	AC 4160V,50Hz
4.Output,Revolution	Refer to Data table	Pole change
5.Insulation class	class F	
6.Duty	Continuous	Short time rating
7.Enclosure	Protected Drip-proof Type Protection : IP22 Cooling : IC01 Totally Enclosed Fan Cooled,Splash Proof Type with Air/Water cooler Protection : IP44 Cooling : IC81W	
8.Starting	Direct-On-Line	Star-Delta
9.Accessory	Cable gland on terminal box and solderless terminal Shaft end Key	Space heater,High temp.sensor for stator winding

項目	標準仕様	オプション
1.適用規格	ABS,BV,CCS,CR,DNV,GL,JG,KR,LRs,NK	
2.周囲条件	温度 45°C又は50°C 相対湿度 95%	
3.定格電圧 定格周波数	AC 3相 3300V/6600V 60Hz	AC 4160V 50Hz
4.出力,回転数	別紙による。	極数変換形
5.絶縁種別	F種	
6.時間定格	連続	短時間定格
7.外被構造	保護防滴形 : 保護方式 IP22 冷却方式 IC01 全閉防まつ形 : 保護方式 IP44 冷却方式 IC81W	
8.始動方式	直入れ	スター・デルタ
9.付属品	端子箱に防水形ケーブルグランド及び圧着端子,軸端キー	スペースヒータ,コイル高温警報用センサ

TYPE-FORM

NTI - 5



■TYPE

Drip proof horizontal type, Two endshield, ball bearing

POLE	POWER (kW)	TYPE	FORM	MASS (kg)	FRAME No.	DIMENSION (mm)							DWG
						C	H	L	M	P	Q	KL	
4	250	NTIKE	VCK5	1300	12S-D	315	670	1600	618	800	170	650	Fig.1
	315			1450	12L-C	400	770	1585	760	900	170	650	
	400			1600	12L-D	400	770	1695	760	990	210	650	
	500			2050	13L-C	450	865	1665	850	990	210	650	
	630			2250	13L-D	450	865	1775	850	990	210	650	
	800			2350	13L-D	450	865	1775	850	1040	210	650	
	900			2550	13L-E	450	865	1885	850	1040	210	650	
	1000			2650	13L-E	450	865	1885	850	1200	210	650	
	1100			3150	14S-E	500	960	1950	950	1200	210	650	
	1250			3350	14S-F	500	960	2060	950	1200	210	650	
	6			250	NTIKE	VCK5	1500	12L-C	400	770	1585	760	
315		1600	12L-D	400			770	1695	760	900	170	650	
400		2050	13L-C	450			865	1665	850	990	210	650	
500		2350	13L-D	450			865	1775	850	990	210	650	
630		2500	13L-D	450			865	1775	850	990	210	650	
800		3150	14S-E	500			960	1950	950	1040	210	650	
900		3350	14S-E	500			960	1950	950	1040	210	650	
8	630	NTIKE	VCK5	3350	14S-D	500	920	1840	950	1040	210	650	Fig.1

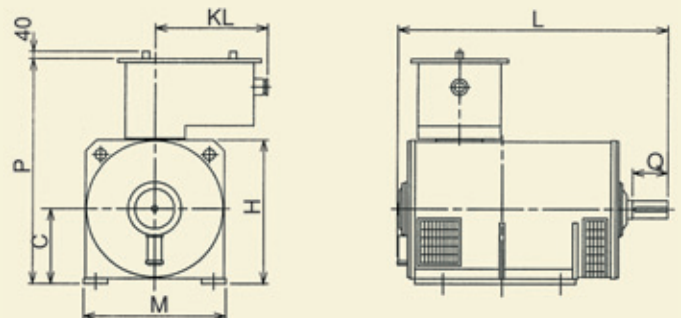


Fig. 1

TYPE
Drip proof horizontal type, Two endshield, ball bearing

POLE	POWER (kW)	TYPE	FORM	MASS (kg)	FRAME No.	DIMENSION (mm)							DWG
						C	H	L	M	P	Q	KL	
4	1600	NTIKE	VCK5	3900	15L-F	500	1700	2100	1100	—	250	1050	Fig.2
	1000			3700	15L-D	500	1700	1900	950	—	210	1050	
6	1100	NTIKE	VCK5	3900	15L-E	500	1700	2000	1100	—	210	1050	
	1250			4000	15L-E	500	1700	2000	1100	—	210	1050	
8	800	NTIKE	VCK5	3900	15L-D	500	1700	1900	950	—	210	1050	
	900			4000	15L-D	500	1700	1900	1100	—	210	1050	
	1000			4300	15L-E	500	1700	2000	1100	—	210	1050	
	1100			5600	17S-D	500	2000	2050	1300	—	250	1150	
	1250			5900	17S-D	630	2000	2050	1300	—	250	1150	
	1600			6500	17S-E	630	2000	2150	1300	—	250	1150	
	2000			7400	17S-F	630	2000	2300	1500	—	250	1150	
10	630	NTIKE	VCK5	3900	15L-D	500	1700	1900	1100	—	210	1050	
	800			4300	15L-E	500	1700	2000	1100	—	210	1050	
	900			5600	17S-C	630	2000	1940	1300	—	210	1150	
	1000			5900	17S-D	630	2000	2050	1300	—	210	1150	
	1100			6200	17S-E	630	2000	2150	1300	—	250	1150	
	1250			6500	17S-E	630	2000	2150	1300	—	250	1150	
12	630	NTIKE	VCK5	4300	15L-E	500	1700	1900	1100	—	210	1050	
	800			5600	17S-C	630	2000	2000	1300	—	210	1150	
	900			6000	17S-D	630	2000	1940	1300	—	210	1150	
	1000			6300	17S-E	630	2000	2050	1300	—	210	1150	
	1100			6700	17S-E	630	2000	2150	1300	—	250	1150	
	1250			7400	17S-F	630	2000	2150	1300	—	250	1150	

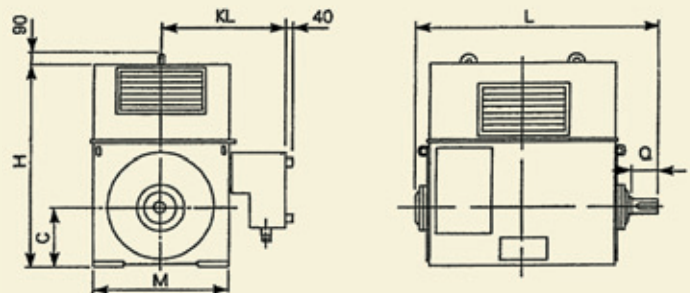


Fig. 2

TYPE

Drip proof horizontal type, Two endshield, sleeve bearing

POLE	POWER (kW)	TYPE	FORM	MASS (kg)	FRAME No.	DIMENSION (mm)							DWG
						C	H	L	M	P	Q	KL	
4	2000	NTIKE	VCC5	4900	17S-D	630	2000	2180	1300	—	250	1150	Fig.3
	2500			6200	17S-F	630	2000	2400	1300	—	250	1150	
	3150			7000	17S-G	630	2000	2550	1300	—	300	1150	
	4000			11200	18S-F	750	2400	2530	1500	—	350	1250	
6	1600	NTIKE	VCC5	5900	17S-E	630	2000	2180	1300	—	250	1150	
	2000			6500	17S-F	630	2000	2450	1300	—	250	1150	
	2500			7500	17S-H	630	2000	2600	1300	—	250	1150	
	3150			10300	18S-F	750	2400	2530	1500	—	350	1250	
8	4000	NTIKE	VCC5	11000	18S-H	750	2400	2750	1500	—	350	1250	
	2500			9000	18S-E	750	2400	2420	1500	—	300	1250	
	3150			10300	18S-F	750	2400	2530	1500	—	300	1250	
	4000			12200	18S-H	750	2400	2800	1500	—	300	1250	
10	5000	NTIKE	VCC5	14500	24L-G	900	2650	2700	1800	—	350	1400	
	1600			9800	18S-D	750	2400	2300	1500	—	300	1250	
	2000			10500	18S-F	750	2400	2530	1500	—	300	1250	
	2500			11200	18S-G	750	2400	2650	1500	—	300	1250	
	3150			13000	24S-G	800	2550	2700	1600	—	300	1300	
	4000			15100	24L-G	900	2700	2700	1800	—	300	1400	
12	5000	NTIKE	VCC5	18000	25L-G	1000	2900	2900	2000	—	350	1500	
	1600			9000	18S-E	750	2400	2300	1500	—	300	1250	
	2000			11000	18S-F	750	2400	2530	1500	—	300	1250	
	2500			13000	24S-G	800	2550	2650	1600	—	300	1300	
	3150			15000	24L-G	900	2700	2700	1800	—	300	1400	
	4000			17500	25L-F	1000	2900	2700	2000	—	350	1500	
5000	20500	25L-H	1000	2900	2800	2000	—	350	1500				

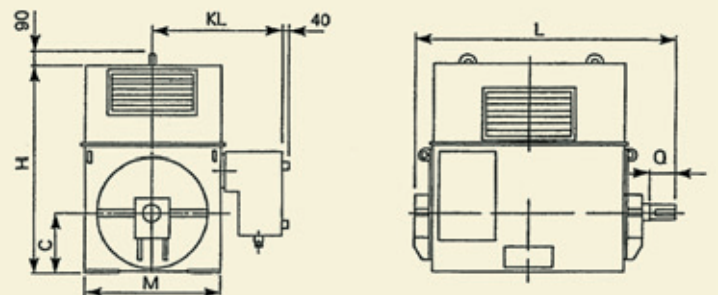


Fig. 3

■TYPE

Drip proof vertical type, Two endshield, ball bearing

POLE	POWER (kW)	TYPE	FORM	MASS (kg)	FRAME No.	DIMENSION (mm)							DWG
						C	D	L	LL	LC	LR	KL	
4	250	NTIKE	VCT5	1350	12S-D	935	670	1700	1530	800	170	875	Fig.4
	315			1520	12L-C	1036	775	1610	1440	900	170	890	
	400			1700	12L-D	1145	865	1760	1550	990	210	935	
	500			2150	13L-C	1145	865	1790	1580	990	210	935	
	630			2470	13L-D	1145	865	1900	1690	990	210	935	
	800			2680	13L-D	1205	920	1900	1690	1040	210	960	
	900			2780	13L-E	1205	920	2010	1800	1040	210	960	
	1000			3310	13L-E	1284	1010	2010	1800	1200	210	1010	
	1100			3400	14S-E	1284	1010	2110	1900	1200	210	1010	
	1250			3500	14S-F	1284	1010	2220	2010	1200	210	1010	
	1600			4150	15L-F	1580	1215	2320	2070	1400	250	1110	
	2000			5200	17S-D	1580	1215	2205	1955	1400	250	1110	
	2500			6550	17S-F	1580	1215	2420	2170	1400	250	1110	
	3150			7400	17S-G	1580	1800	2580	2280	1460	300	1400	
6	250	NTIKE	VCT5	1570	12L-C	1036	775	1610	1440	900	170	890	Fig.4
	315			1680	12L-D	1036	775	1720	1550	900	170	890	
	400			2150	13L-C	1145	865	1790	1580	990	210	935	
	500			2470	13L-D	1145	865	1900	1690	990	210	935	
	630			2610	13L-D	1145	865	1900	1690	990	210	935	
	800			3310	14S-E	1205	920	2110	1900	1040	210	960	
	900			3500	14S-E	1205	920	2110	1900	1040	210	960	
	1000			3950	15L-D	1284	1010	2060	1850	1200	210	1010	
	1100			4150	15L-E	1284	1010	2170	1960	1200	210	1010	
	1250			4250	15L-E	1284	1010	2170	1960	1200	210	1010	
	1600			5550	17S-E	1580	1215	2310	2060	1400	250	1110	
	2000			6900	17S-F	1580	1215	2420	2170	1400	250	1110	
	2500			7930	17S-H	1580	1215	2640	2390	1400	250	1110	
	8			630	NTIKE	VCT5	3500	14S-D	1205	920	2000	1790	
800		4150	15L-D	1284			1010	2060	1850	1200	210	1010	
900		4250	15L-D	1284			1010	2060	1850	1200	210	1010	
1000		5000	15L-E	1284			1010	2170	1960	1200	210	1010	
1100		5550	17S-D	1580			1215	2200	1950	1400	250	1110	
1250		5830	17S-D	1580			1215	2200	1950	1400	250	1110	
1600		6550	17S-E	1580			1215	2310	2060	1400	250	1110	
2000		7850	17S-F	1580			1215	2420	2170	1400	250	1110	
10	630	NTIKE	VCT5	4150	15L-D	1205	1010	2060	1850	1200	210	1010	Fig.4
	800			4570	15L-E	1205	1010	2170	1960	1200	210	1010	
	900			5550	17S-C	1580	1215	2060	1850	1400	210	1110	
	1000			5830	17S-D	1580	1215	2160	1950	1400	210	1110	
	1100			6550	17S-E	1580	1215	2310	2060	1400	250	1110	
	1250			6900	17S-E	1580	1215	2310	2060	1400	250	1110	
12	630	NTIKE	VCT5	4550	15L-E	1205	1010	2060	1850	1200	210	1010	Fig.4
	800			5510	17S-C	1205	1010	2170	1960	1200	210	1110	
	900			6350	17S-D	1580	1215	2060	1850	1400	210	1110	
	1000			6670	17S-E	1580	1215	2160	1950	1400	210	1110	
	1100			7100	17S-E	1580	1215	2310	2060	1400	250	1110	
	1250			7830	17S-F	1580	1215	2310	2060	1400	250	1110	

TYPE

Drip proof vertical type, Two endshield, ball bearing

POLE	POWER (kW)	TYPE	FORM	MASS (kg)	FRAME No.	DIMENSION (mm)							DWG
						C	D	L	LL	LC	LR	KL	
4	4000	NTIKE	VCT5	8650	18S-F	—	1800	2750	2400	1460	350	1400	Fig.5
6	3150	NTIKE	VCT5	9450	18S-F	—	1800	2650	2300	1460	350	1450	
	4000			11500	18S-H	—	1800	2750	2400	1460	350	1450	
8	2500	NTIKE	VCT5	9450	18S-E	—	1800	2380	2080	1460	300	1450	
	3150			10800	18S-F	—	1800	2490	2190	1460	300	1450	
	4000			12850	18S-H	—	1800	2700	2400	1460	300	1450	
	5000			15250	24L-G	—	2000	2800	2450	1660	350	1550	
				1600	8450	18S-D	—	1800	2270	1970	1400	300	
10	2000	NTIKE	VCT5	9750	18S-F	—	1800	2490	2190	1460	300	1450	
	2500			11700	18S-G	—	1800	2600	2300	1460	300	1450	
	3150			13700	24S-G	—	1900	2500	2200	1560	300	1500	
	4000			15900	24L-G	—	2000	2750	2450	1660	300	1550	
	5000			18900	25L-G	—	2200	2850	2500	1860	350	1650	
12	1600	NTIKE	VCT5	9500	18S-E	—	1800	2270	1970	1400	300	1450	
	2000			11550	18S-F	—	1800	2490	2190	1460	300	1450	
	2500			13650	24S-G	—	1800	2600	2300	1460	300	1500	
	3150			15750	24L-G	—	1900	2500	2200	1560	300	1550	
	4000			18400	25L-F	—	2000	2800	2450	1660	350	1650	
	5000			21500	25L-H	—	2200	2850	2500	1860	350	1650	

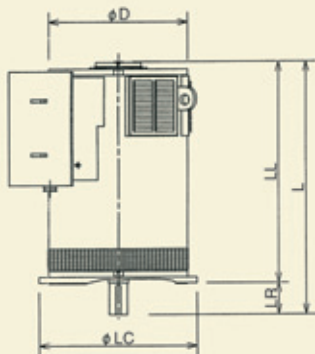
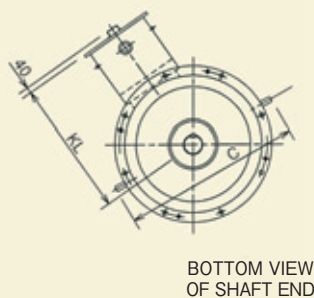


Fig. 4



BOTTOM VIEW OF SHAFT END

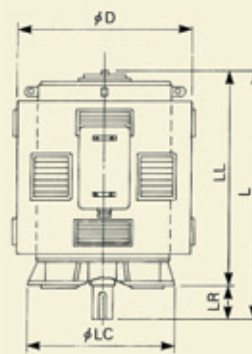
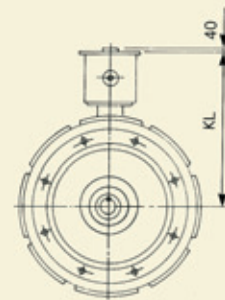


Fig. 5



BOTTOM VIEW OF SHAFT END

■TYPE

Totally enclosed with water cooled air cooler, Two endshiled bearing

POLE	POWER (kW)	TYPE	FORM	MASS (kg)	FRAME No.	DIMENSION (mm)							DWG
						C	H	L	M	Q	DB	KL	
4	250	NTIKE	RCK5	1400	12S-D	315	980	1650	700	170	545	800	Fig.6
	315			1550	12L-C	355	1060	1600	800	170	595	850	
	400			1700	12L-D	355	1100	1700	800	170	595	850	
	500			2200	13L-C	400	1270	1650	900	170	635	900	
	630			2400	13L-D	400	1360	1750	900	170	635	900	
	800			2500	13L-D	400	1440	1750	900	170	635	900	
	900			2700	13L-E	400	1440	1900	900	170	635	900	
	1000			2800	13L-E	400	1520	1900	900	170	635	900	
	1100			3700	14S-E	450	1700	1950	1000	210	695	950	
	1250			3900	14S-F	450	1700	2000	1000	210	695	950	
	1600			4500	15L-F	500	1890	2050	1100	210	745	1050	
6	250	NTIKE	RCK5	1600	12L-C	355	1060	1600	800	170	595	850	Fig.6
	315			1700	12L-D	355	1100	1700	800	170	595	850	
	400			2200	13L-C	400	1150	1650	900	170	635	900	
	500			2500	13L-D	400	1270	1750	900	170	635	900	
	630			2600	13L-D	400	1360	1750	900	170	635	900	
	800			3700	14S-E	450	1540	1950	1000	210	695	950	
	900			3900	14S-E	450	1620	1950	1000	210	695	950	
	1000			4300	15L-D	500	1800	1850	1100	210	745	1050	
	1100			4550	15L-E	500	1890	1950	1100	210	745	1050	
	1250			4800	15L-E	500	1890	1950	1100	210	745	1050	
8	630	NTIKE	RCK5	3700	14S-D	450	1540	1850	1000	210	695	950	Fig.6
	800			4500	15L-D	500	1720	1850	1100	210	745	1050	
	900			4750	15L-D	500	1800	1850	1100	210	745	1050	
	1000			6300	15L-E	500	1800	1950	1100	210	745	1050	
	1100			6600	17S-D	630	1900	2000	1300	250	845	1150	
	1250			7600	17S-D	630	1900	2000	1300	250	845	1150	
	1600			8600	17S-E	630	2200	2050	1300	250	845	1150	
	2000			9800	17S-F	630	2200	2150	1300	250	845	1150	
10	630	NTIKE	RCK5	4200	15L-D	500	1640	1850	1100	210	745	1050	Fig.6
	800			4700	15L-E	500	1720	1950	1100	210	745	1050	
	900			6300	17S-C	630	2060	2000	1300	250	845	1150	
	1000			6600	17S-D	630	2060	2100	1300	250	845	1150	
	1100			7600	17S-E	630	2200	2050	1300	250	845	1150	
	1250			7900	17S-E	630	2200	2050	1300	250	845	1150	
	1600			8700	17S-F	630	2200	2150	1300	250	845	1150	
12	630	NTIKE	RCK5	4700	15L-E	500	1640	1950	1100	210	745	1050	Fig.6
	800			6300	17S-C	630	1980	1850	1300	250	845	1150	
	900			7300	17S-D	630	1980	1950	1300	250	845	1150	
	1000			7700	17S-E	630	1980	2050	1300	250	845	1150	
	1100			8000	17S-E	630	2060	2050	1300	250	845	1150	
	1250			8700	17S-F	630	2060	2150	1300	250	845	1150	

TYPE

Totally enclosed with water cooled air cooler, Two endshield bearing

POLE	POWER (kW)	TYPE	FORM	MASS (kg)	FRAME No.	DIMENSION (mm)							DWG
						C	H	L	M	Q	DB	KL	
10	1600	NTIKE	RCC5	9000	18S-D	750	2400	2400	1500	300	945	1250	Fig.7
	2000			10200	18S-F	750	2400	2550	1500	300	945	1250	
12	1600	NTIKE	RCC5	9800	18S-E	750	2470	2400	1500	300	945	1250	
	2000			12000	18S-F	750	2470	2500	1500	300	945	1250	

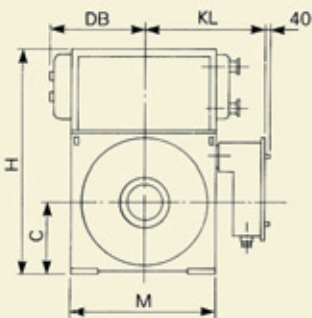


Fig. 6

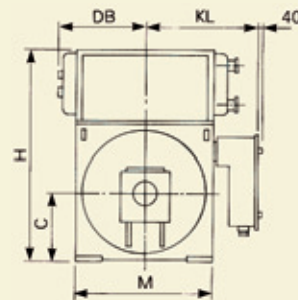
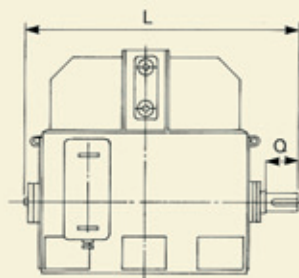
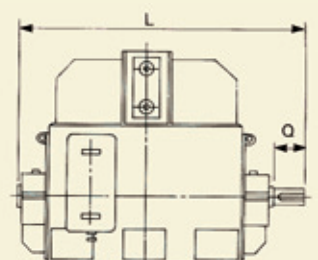


Fig. 7



■TYPE

Totally enclosed with water cooled air cooler, Two endshield bearing

POLE	POWER (kW)	TYPE	FORM	MASS (kg)	FRAME No.	DIMENSION (mm)							DWG
						C	H	L	M	Q	DB	KL	
4	2000	NTIKE	RCC5	5500	17S-D	630	2200	2200	1300	250	845	1150	Fig.8
	2500			6300	17S-F	630	2200	2350	1300	250	845	1150	
	3150			7900	17S-G	630	2200	2500	1300	250	845	1150	
	4000			10000	18S-F	750	2450	2600	1500	300	945	1250	
6	1600	NTIKE	RCC5	7900	17S-E	630	2200	2200	1300	250	845	1150	
	2000			8900	17S-F	630	2200	2300	1300	250	845	1150	
	2500			11000	17S-H	630	2200	2500	1300	250	845	1150	
	3150			12100	18S-F	750	2450	2500	1500	300	945	1250	
8	4000	NTIKE	RCC5	13000	18S-H	750	2450	2750	1500	300	945	1250	
	2500			12100	18S-E	750	2450	2300	1500	300	945	1250	
	3150			13000	18S-F	750	2450	2500	1500	300	945	1250	
	5000			13900	18S-H	750	2450	2750	1500	300	945	1250	
10	2500	NTIKE	RCC5	17000	24L-G	900	2700	2700	1800	300	1095	1400	
	3150			13800	18S-G	750	2400	2650	1500	300	945	1250	
	4000			15300	24S-G	800	2500	2700	1600	300	995	1300	
	5000			17700	24L-G	900	2700	2700	1800	300	1095	1400	
12	2500	NTIKE	RCC5	20000	25L-G	1000	2900	2750	2000	350	1195	1500	
	3150			15300	24S-G	800	2500	2700	1600	300	995	1300	
	4000			17100	24L-G	900	2700	2700	1800	300	1095	1400	
	5000			19200	25L-F	1000	2900	2650	2000	350	1195	1500	
				21800	25L-H	1000	2900	2800	2000	350	1195	1500	

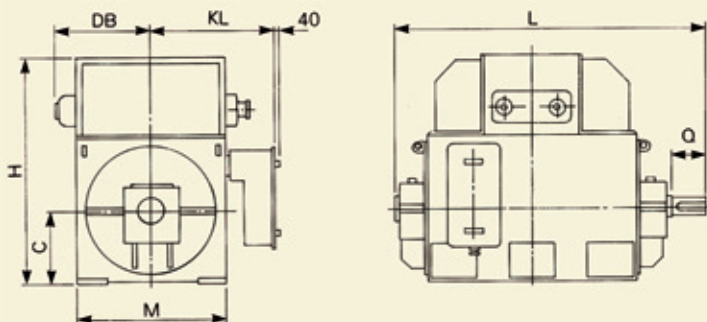


Fig. 8

TYPE

Totally enclosed with water cooled air cooler, Two endshield bearing

POLE	POWER (kW)	TYPE	FORM	MASS (kg)	FRAME No.	DIMENSION (mm)								DWG
						D	H	L	DB	LL	LC	LR	KL	
4	250	NTIKE	RCT5	1470	12S-D	700	700	1750	545	1580	780	170	800	Fig.9
	315			1630	12L-C	800	750	1650	595	1480	800	170	850	
	400			1790	12L-D	800	790	1750	595	1580	800	170	850	
	500			2300	13L-C	900	920	1700	635	1530	900	170	900	
	630			2500	13L-D	900	1010	1800	635	1630	900	170	900	
	800			2650	13L-D	900	1090	1800	635	1630	900	170	900	
	900			2850	13L-E	900	1090	1900	635	1730	900	170	900	
	1000			2950	13L-E	900	1170	1900	635	1730	900	170	900	
	1100			3890	14S-E	1000	1300	1950	695	1740	1000	210	950	
	1250			4100	14S-F	1000	1300	2000	695	1790	1000	210	950	
6	250	NTIKE	RCT5	1680	12L-C	800	750	1650	595	1480	800	170	850	Fig.9
	315			1790	12L-D	800	790	1750	595	1580	800	170	850	
	400			2300	13L-C	900	850	1700	635	1530	900	170	900	
	500			2630	13L-D	900	930	1800	635	1630	900	170	900	
	630			2730	13L-D	900	1020	1800	635	1630	900	170	900	
	800			3900	14S-E	1000	1140	1950	695	1740	1000	210	950	
	900			4100	14S-E	1000	1220	1950	695	1740	1000	210	950	
8	630	NTIKE	RCT5	3890	14S-D	1000	1140	1900	695	1690	1000	210	950	Fig.9
	800			4730	15L-D	1100	1270	1900	745	1690	1150	210	1050	
	900			5000	15L-D	1100	1350	1900	745	1690	1150	210	1050	
	1000			6100	15L-E	1100	1350	1950	745	1740	1260	210	1050	
10	630	NTIKE	RCT5	4400	15L-D	1100	1190	1900	745	1690	1150	210	1050	Fig.9
	800			4950	15L-E	1100	1270	2000	745	1790	1150	210	1050	
12	630	NTIKE	RCT5	4940	15L-E	1100	1190	2000	745	1790	1150	210	1050	Fig.9
	800			6600	17S-C	1300	1450	2050	845	1800	1360	250	1150	

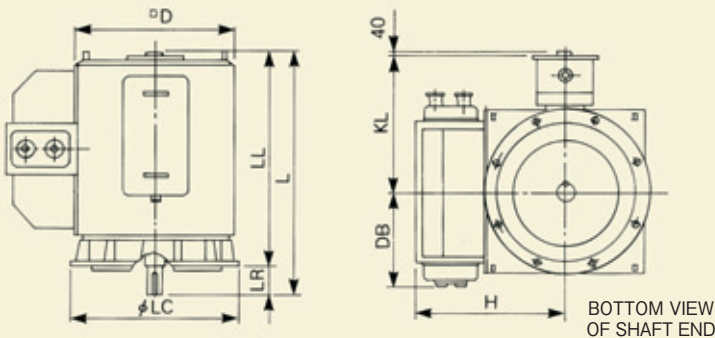


Fig. 9

■TYPE

Totally enclosed with water cooled air cooler, Two endshield bearing

POLE	POWER (kW)	TYPE	FORM	MASS (kg)	FRAME No.	DIMENSION (mm)								DWG
						D	H	L	DB	LL	LC	LR	KL	
4	1600	NTIKE	RCT5	4730	15L-F	1100	1300	2050	745	1840	1150	210	1050	Fig.10
	2000			5800	17S-D	1300	2900	2200	845	1950	1360	250	1150	
6	1000	NTIKE	RCT5	4520	15L-D	1100	1300	1900	745	1690	1150	210	1050	
	1100			4800	15L-E	1100	1300	2000	745	1790	1150	210	1050	
	1250			5050	15L-E	1100	1300	2000	745	1790	1150	210	1050	
	1600			6300	17S-E	1300	2900	2100	845	1850	1360	250	1150	
8	1000	NTIKE	RCT5	6600	17S-D	1300	1450	2000	845	1750	1360	250	1150	
	1250			7000	17S-D	1300	1450	2000	845	1750	1360	250	1150	
	1600			8000	17S-E	1300	1450	2100	845	1850	1360	250	1150	
	2000			9050	17S-F	1300	1450	2200	845	1950	1360	250	1150	
10	900	NTIKE	RCT5	6600	17S-C	1300	1450	2050	845	1800	1360	250	1150	
	1000			6950	17S-D	1300	1450	2070	845	1820	1360	250	1150	
	1100			7980	17S-E	1300	1450	2100	845	1850	1360	250	1150	
	1250			8300	17S-E	1300	1450	2100	845	1850	1360	250	1150	
	1600			9500	18S-D	1500	3100	2250	945	1950	1560	300	1250	
	2000			10700	18S-F	1500	3100	2350	945	2050	1560	300	1250	
12	900	NTIKE	RCT5	7600	17S-D	1300	1450	2000	845	1750	1360	250	1150	
	1000			8100	17S-E	1300	1450	2100	845	1850	1360	250	1150	
	1100			8400	17S-E	1300	1450	2100	845	1850	1360	250	1150	
	1250			9150	17S-F	1300	1450	2200	845	1950	1360	250	1150	
	1600			10300	18S-E	1500	1550	2400	945	2100	1560	300	1250	
	2000			12600	18S-F	1500	1550	2450	945	2150	1560	300	1250	

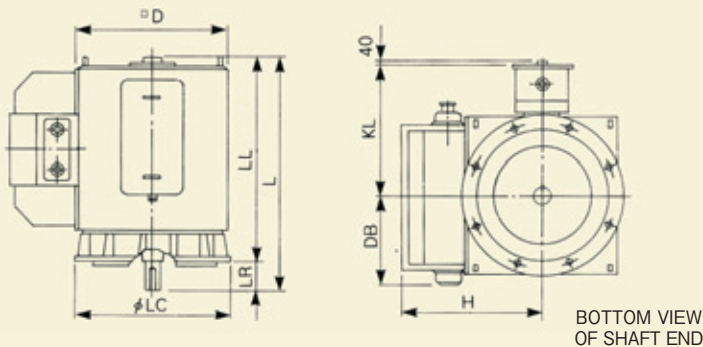


Fig. 10

TYPE

Totally enclosed with water cooled air cooler, Two endshield bearing

POLE	POWER (kW)	TYPE	FORM	MASS (kg)	FRAME No.	DIMENSION (mm)								DWG
						D	H	L	DB	LL	LC	LR	KL	
4	2500	NTIKE	RCT5	7250	17S-F	1300	2900	2400	845	2150	1360	250	1150	Fig.11
	3150			8300	17S-G	1300	2900	2500	845	2250	1360	250	1150	
	4000			10500	18S-F	1500	3100	2700	945	2400	1560	300	1250	
6	2000	NTIKE	RCT5	8300	17S-F	1300	2900	2200	845	1950	1360	250	1150	
	2500			9350	17S-H	1300	2900	2350	845	2100	1360	250	1150	
	3150			11600	18S-F	1500	3100	2600	945	2300	1560	300	1250	
	4000			13650	18S-H	1500	3100	2800	945	2500	1560	300	1250	
8	2500	NTIKE	RCT5	10300	18S-E	1500	3100	2400	945	2100	1560	300	1250	
	3150			12700	18S-F	1500	3100	2500	945	2200	1560	300	1250	
	4000			14600	18S-H	1500	3100	2700	945	2400	1560	300	1250	
	5000			17850	24L-G	1800	3400	2800	1095	2500	1860	300	1400	
10	2500	NTIKE	RCT5	14500	18S-G	1500	3100	2400	945	2100	1560	300	1250	
	3150			16100	24S-G	1600	3200	2500	995	2200	1660	300	1300	
	4000			18500	24L-G	1800	3400	2800	1095	2500	1860	300	1400	
	5000			21000	25L-G	2000	3600	2900	1195	2550	2100	350	1500	
12	2500	NTIKE	RCT5	16000	24S-G	1600	3200	2500	995	2200	1660	300	1300	
	3150			18000	24L-G	1800	3400	2800	1095	2500	1860	300	1400	
	4000			20200	25L-F	2000	3600	2900	1195	2550	2100	350	1500	
	5000			22900	25L-H	2000	3600	3100	1195	2750	2100	350	1500	

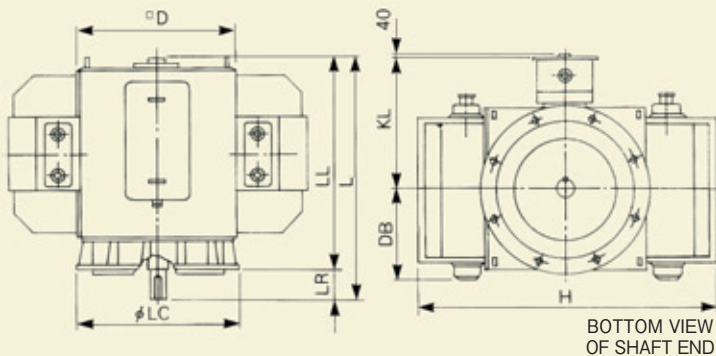


Fig. 11



NISHISHIBA ELECTRIC CO., LTD.
西芝電機株式会社

■ HEAD OFFICE, FACTORY & BRANCHES

Head Office & Factory

1000 Hamada, Aboshi-ku,
Himeji 671-1280, Japan.
Phone: Himeji +81-79-271-2448
Facsimile: +81-79-271-2305

Tokyo Branch

Solid Square West Tower, 580 Horikawa-cho, Saiwai-ku,
Kawasaki 212-0013, Japan.
Phone: Kawasaki +81-44-542-2400 / 2401
Facsimile: +81-44-542-2407 / 2410

Osaka Branch

29th Fl., Umeda Sky Building West Tower,
1-30, Oyodonaka 1-chome, Kita-ku, Osaka 531-6129, Japan.
Phone: Osaka +81-6-4797-2448
Facsimile: +81-6-4797-2453

Hiroshima Branch

Grand Building Otemachi, 11-2, Otemachi 2-chome, Naka-ku,
Hiroshima 730-0051, Japan.
Phone: Hiroshima +81-82-244-1830
Facsimile: +81-82-247-4098

Fukuoka Branch

Toshiba Fukuoka Building, 4-1, Nagahama 2-chome, Chuo-ku,
Fukuoka 810-0072, Japan.
Phone: Fukuoka +81-92-722-2448
Facsimile: +81-92-722-2300

■ 本社、工場、支社、支店

本社・工場

〒671-1280
兵庫県姫路市網干区浜田1000番地
Tel:(079)271-2448(代)
Facsimile:(079)271-2305

東京支社

〒212-0013
神奈川県川崎市幸区堀川町580番地(ソリッドスクエア西館)
Tel:(044)542-2400 / 2401(代)
Facsimile:(044)542-2407 / 2410

関西支社

〒531-6129
大阪府大阪市北区大淀中1丁目1番30号(梅田スカイビル タワーウエスト29階)
Tel:(06)4797-2448(代)
Facsimile:(06)4797-2453

中国支店

〒730-0051
広島県広島市中区大手町2丁目11番2号(グランドビル大手町)
Tel:(082)244-1830(代)
Facsimile:(082)247-4098

九州支店

〒810-0072
福岡県福岡市中央区長浜2丁目4番1号(東芝福岡ビル)
Tel:(092)722-2448(代)
Facsimile:(092)722-2300

<http://www.nishishiba.co.jp>



安全に関するご注意
Safety Precautions

- 正しく安全にお使いいただくために、ご使用前に必ず取扱説明書をよくお読み下さい。
- Operators should read the INSTRUCTION MANUAL before starting operation on safe use of the product.

- 資料の内容は、お断りなしに変更することがありますのでご了承下さい。
- The data given in this catalogue are subject to change without notice.